

NC252C Carpet Serger

Parts Book & Manual



NC Carpet Binding
858 Summer Avenue
Newark, NJ 07104
P 973-481-3500
sales@nccarpet.com
www.nccarpet.com

INSTRUCTION MANUAL

FITTING INSTRUCTION

安裝圖

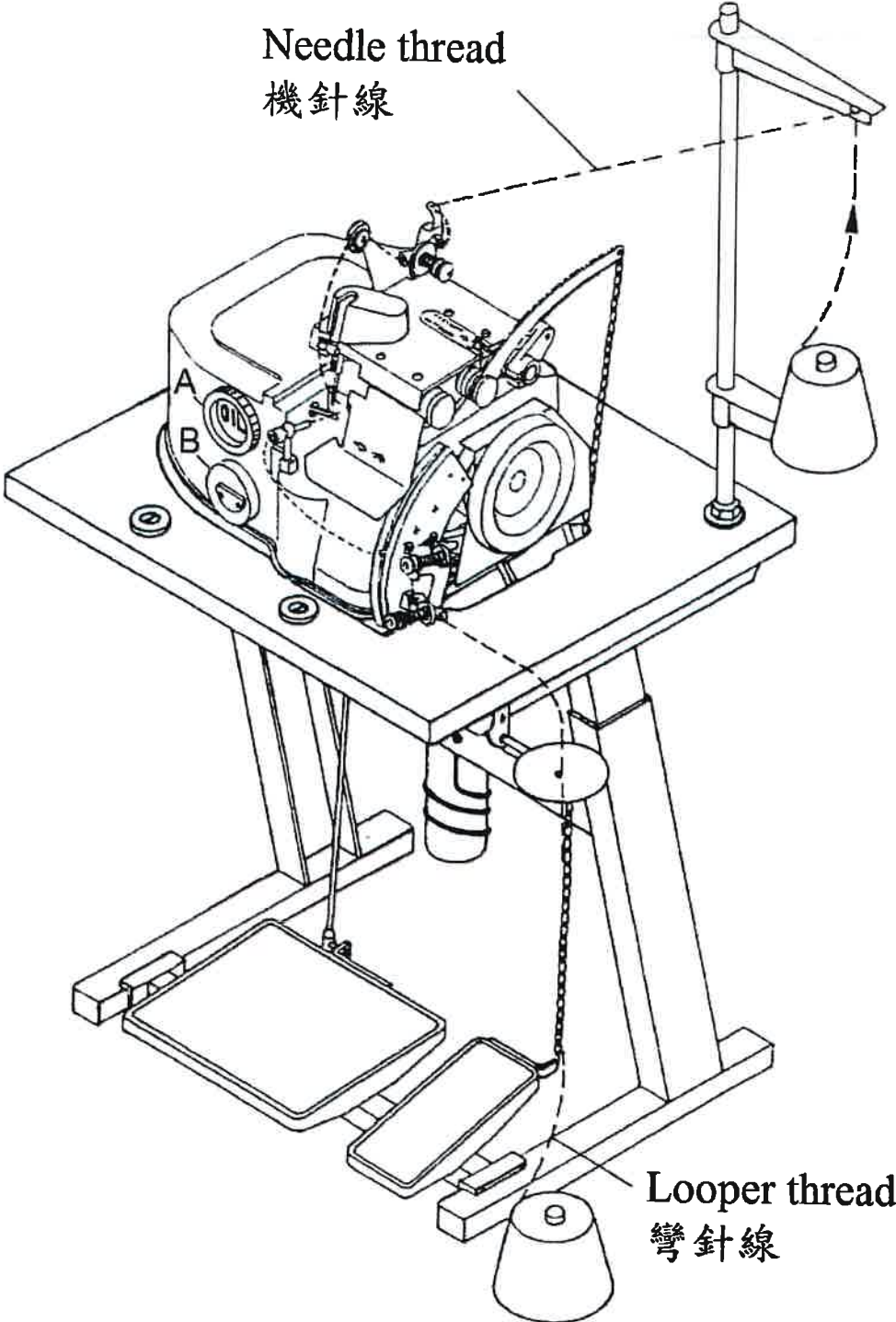


Fig. 1-1

1 SETTING THE MACHINE

Assemble stand, table and motor as illustration (Fig. 1-1).

Driving belt must be tightened slackly (Fig. 1-2).

Drop oil at (A, Fig. 1-1). The oil level is checked from gauge (B).

LUBRICATION:

Please use good quality of viscosity oil. To get the best performance, never run the machine without oil. A little amount of oil will disappear daily from the machine when working. As to enable the operator to check oil amount from gauge. If required, refill the oil reservoir by unscrewing the filler plug. Before refill new oil, old oil should be completely removed.

NEEDLE TYPE:

7713/230, 180 or 160	Standard needle	Standard carpets
7713-99/230, 180 or 160	Square pointed needle	Heavy car carpets

1 安裝機器

安裝馬達、桌板和腳架如（圖 1-1）。

安裝皮帶不可太緊如（圖 1-2）。

從（A，圖 1-1）注入油，從油尺（B）確認機器有足夠的油。

加油：

請使用優質具有粘性的油，要獲得最佳的性能，永遠不要在油量不足的情況下運行機器。機器每天會減少少量的油，請定期檢查，若油量不足，請擰開油封將油注入，可從油尺觀察油量。應將舊油完全清除再加入新油。

機針款式：

7713/230、180、160	標準針	標準地毯
7713-99/230、180、160	方尖針	厚汽車地毯

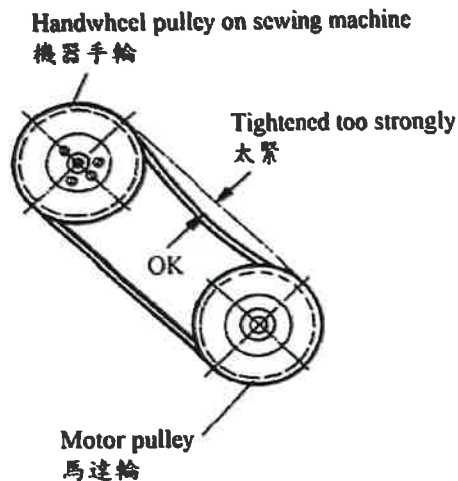


Fig. 1-2

2 THREAD

Bring take up (C, Fig. 2) to its highest position. Bring looper thread through thread tension (E) and (F) to threading hole (A). Bring take up (C) to its lowest position and be sure looper eye (M) face threading tube (L). Remove needle and bring needle thread through thread tension (G) to looper eye (M).

2 穿線

將挑線器 (C, 圖 2) 調至最上方, 引彎針線通過張力調節器 (E) 和 (F) 並穿過線孔 (A)。將挑線器 (C) 調至最下方並確認下彎針的線眼 (M) 面向導線管 (L)。卸載機針並引機針線通過張力調節器 (G) 至下彎針的線眼 (M)。

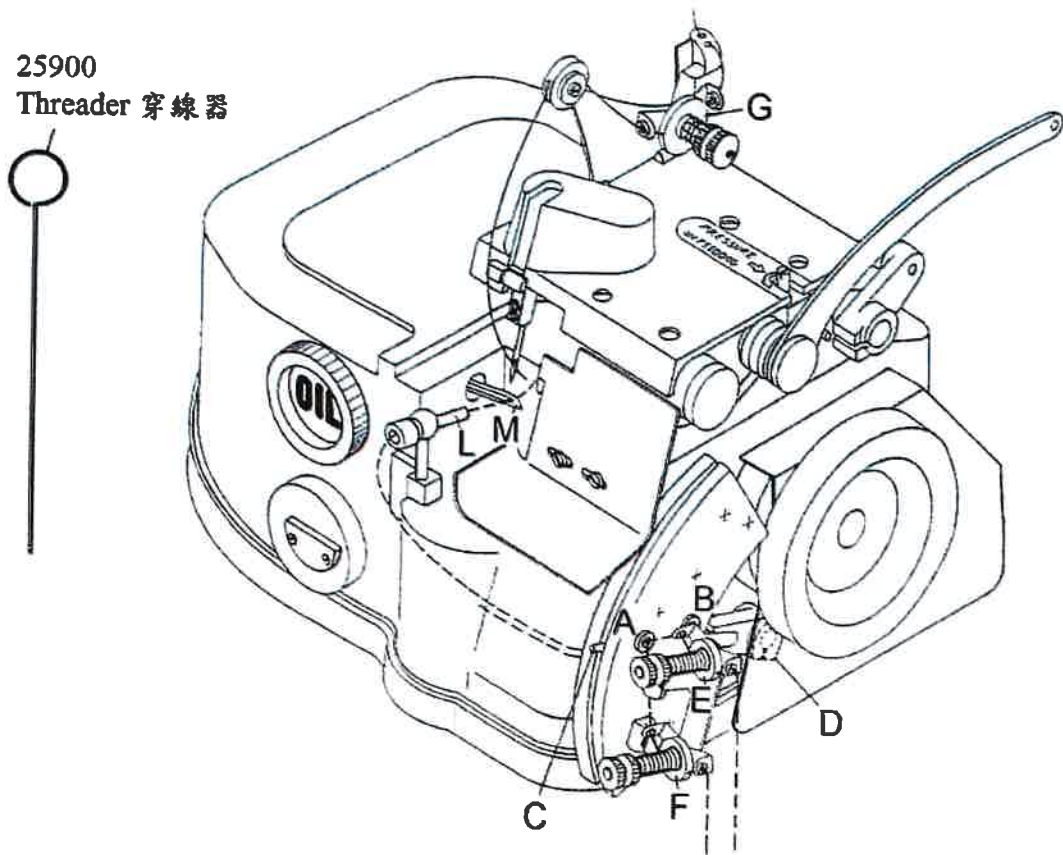


Fig. 2

3 ADJUSTING THREAD FEED

Two thread

(Fig. 3-1) and (C2, Fig. 3-7): Correct feed, looper thread and needle thread have consistent tensions.

(Fig. 3-2) and (C1, Fig. 3-7): Looper thread tension is too high, or needle thread tension is too low.

(Fig. 3-3) and (C3, Fig. 3-7): Looper thread tension is too low, or needle thread tension is too high.

Loosen screw (D, Fig. 3-8) to adjust it.

Three thread

Bring looper thread through thread hole (B, Fig. 3-9).

(Fig. 3-4): Correct thread feed, looper thread and needle thread have consistent tensions.

(Fig. 3-5): Looper thread tension is too low, or needle thread tension is too high.

(Fig. 3-6): Looper thread tension is too high, or needle thread tension is too low.

3 調整出線

二線

(圖 3-1) 和 (C2, 圖 3-7): 正確出線, 機針線和彎針線有一致性的張力。

(圖 3-2) 和 (C1, 圖 3-7): 錯誤出線, 彎針線張力太緊或機針線張力太鬆。

(圖 3-3) 和 (C3, 圖 3-7): 錯誤出線, 彎針線張力太鬆或機針線張力太緊。

放鬆螺絲 (D, 圖 3-8) 以進行調整。

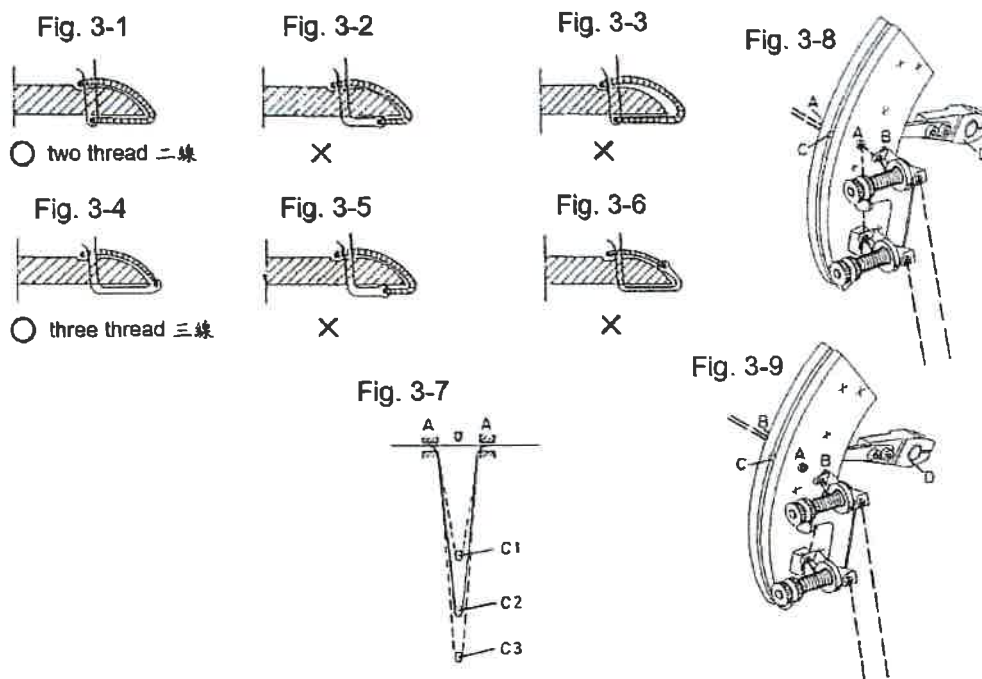
三線

引彎針線穿過線孔 (B, 圖 3-9)。

(圖 3-4): 正確出線, 機針線和彎針線有一致性的張力。

(圖 3-5): 錯誤出線, 彎針線張力太鬆或機針線張力太緊。

(圖 3-6): 錯誤出線, 彎針線張力太緊或機針線張力太鬆。



4 EXTERNAL THREAD FEED ADJUSTER (OPTION)

Two thread (hole a): Loosen screw (J, Fig. 4). Turn regulator (K) clockwise to increase thread feed, or counterclockwise to reduce it.

Three thread (hole b): Loosen screw (J, Fig. 4). Turn regulator (K) clockwise to reduce thread feed, or counterclockwise to increase.

4 外部出線調整器 (選購)

二線 (線孔 a): 放鬆螺絲 (J、圖 4)。順時針轉動調整器 (K) 增加出線量，逆時針減少出線量。

三線 (線孔 b): 放鬆螺絲 (J、圖 4)。順時針轉動調整器 (K) 減少出線量，逆時針增加出線量。

5 CUTTING DEVICE

Replace upper knife: Loosen screw (C, Fig. 5). Remove screw (A) to replace a new one.

Replace lower knife: Remove screw (B, Fig. 5) to replace a new one.

Turn screw (C, Fig. 5) clockwise to bring upper knife toward lower knife. Be sure that upper knife touch lower knife slightly. Loosen screw (D) to adjust upper knife holder. Check to be sure that distance (F) between upper knife and needle plate is 3mm.

5 修布刀

更換上刀：放鬆螺絲 (C，圖 5)，完全鬆開螺絲 (A) 後更換。

更換下刀：完全鬆開螺絲 (B，圖 5) 後更換。

順時針轉動螺絲 (C，圖 5)，上刀向下刀靠近，確認兩刀輕輕碰觸，放鬆螺絲 (D) 可調整上刀座。確認上切刀和針板有 3mm 的空隙 (F)。

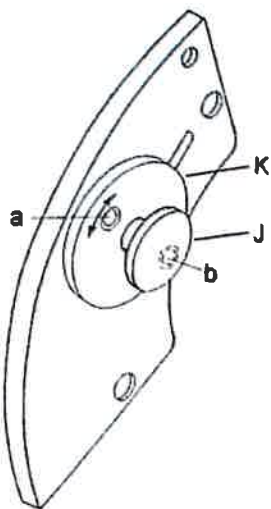


Fig. 4

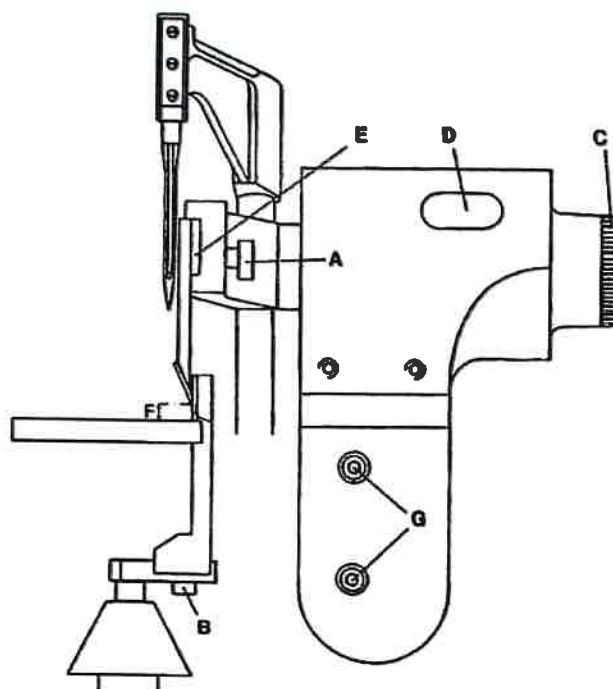


Fig. 5

6 CARPET GUIDE

Loosen two screws (B, Fig. 6) to move guide (A) right or left to adjust position of carpet edge.

6 導布

放鬆兩顆螺絲 (B, 圖 6) 可左右移動導布器 (A) 以調整布邊位置。

7 ADJUSTING UPPER LOOPER AND LOWER LOOPER

Bring upper looper (C, Fig. 7) to its highest position. At this time, distance (A) between upper looper and needle is 4.5mm. This distance might be increased or decreased by 1mm for using different type of thread.

Loosen screws (B, Fig. 7) to adjust upper looper (C) right or left by 1mm. Bring upper looper toward needle and pass lower looper (E). At this time, upper looper's tip (D) is moved toward lower looper's groove. Be sure that upper looper does not touch lower looper.

7 上彎針和下彎針調整

當上彎針 (C, 圖 7) 在最高點時, 上彎針與機針的空隙 (A) 為 4.5mm, 此空隙依不同的線有 1mm 的增減。

放鬆螺絲 (B, 圖 7) 可左右調整上彎針 1mm 的距離, 當上彎針 (C) 朝向機針時會越過下彎針 (E), 此時上彎針的尖點 (D) 向下彎針的溝槽運轉。確認上彎針與下彎針沒有碰觸。

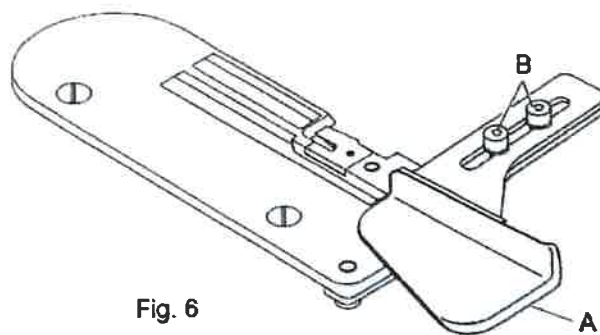


Fig. 6

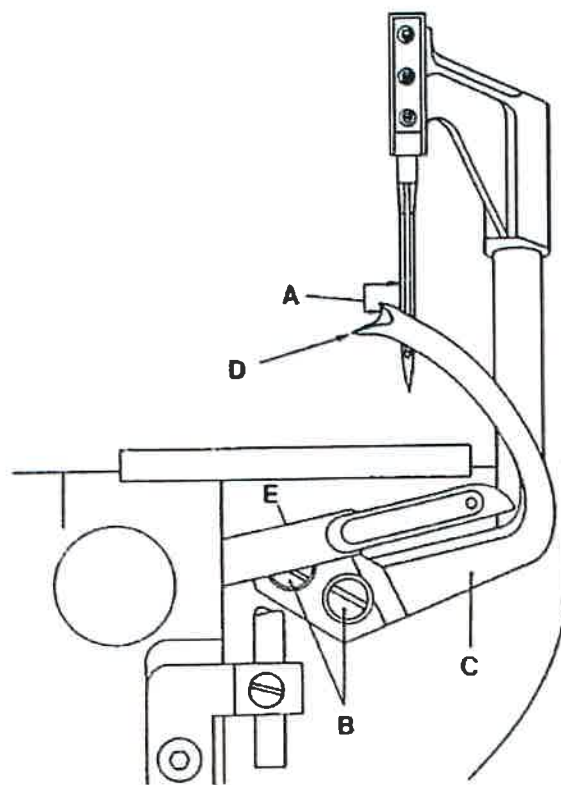


Fig. 7

8 ADJUSTING STITCH DENSITY

Bring needle to its lowest position. Loosen nut (A, Fig. 8) to adjust stitch length. Move nut (A) left to decrease stitch numbers, or right to increase it.

8 針距密度調整

將機針轉至最低處，放鬆螺母（A，圖8）以調整針距，左移減少針數，右移增加針數。

9 EXTERNAL STITCH DENSITY ADJUSTER (OPTION)

Loosen two screws (B, Fig. 9). Turn regulator (C) clockwise to increase stitch numbers, or counterclockwise to decrease it.

9 外部針距密度調整器（選購）

放鬆兩顆螺絲（B，圖9），順時針轉動（C）增加針數，逆時針轉動減少針數。

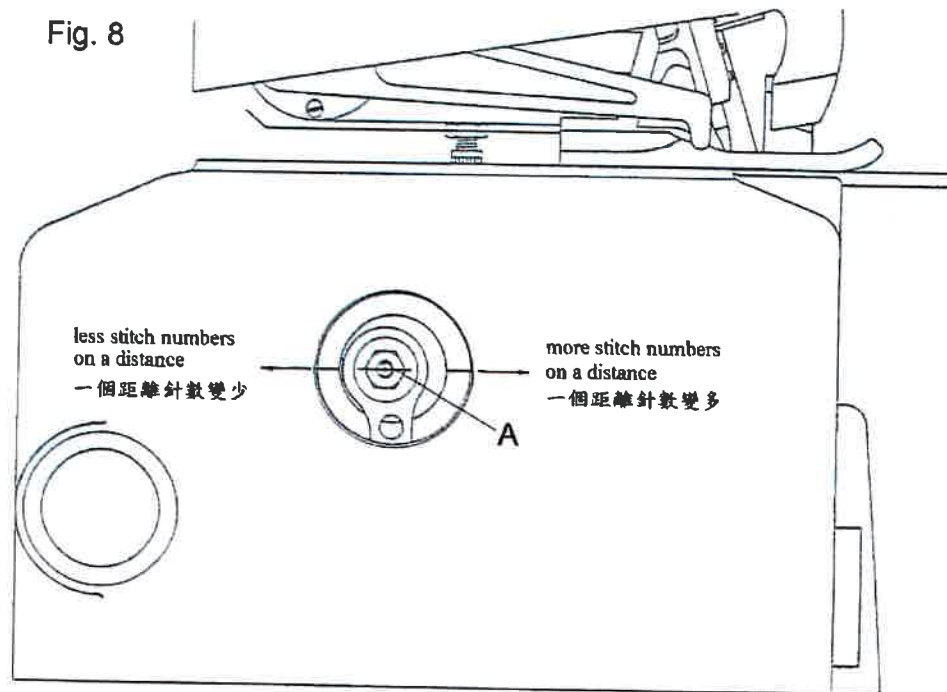
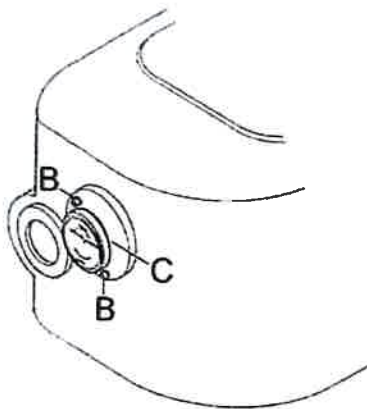


Fig. 9



10 ADJUSTING NEEDLE BAR AND NEEDLE

Adjusting needle bar

Loosen two screw (A, Fig. 10-1) to adjust position of needle bar (B) in holder (C). Bring needle (D) to the slot (E) of needle plate (I) and then aligns needle tip to the center of slot (E).

Adjusting needle

Loosen screw (G, Fig. 10-1) and adjust position of screw (F) to make height in 3mm as illustration.

Tighten screw (G, Fig. 10-1) and then bring needle bar (B) to its highest position. Loosen two screws (H) to adjust position of needle (D) so that distance between needle tip and needle plate is 23mm as illustration.

Correct timing that formation of thread loop is when needle rise 1.7mm to 2mm from its lowest position as illustration (Fig. 10-2).

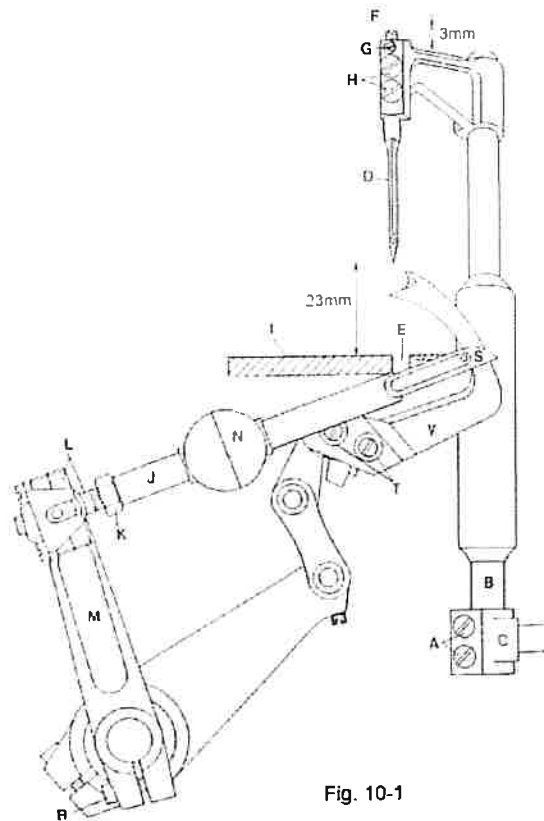


Fig. 10-1

10 針棒和機針調整

調整針棒

放鬆兩顆螺絲 (A, 圖 10-1) 可調整針棒 (B) 在針棒座 (C) 的位置, 將機針 (D) 轉至針板 (I) 的狹縫處 (E), 調整針尖到狹縫處 (E) 的中心點。

調整機針

放鬆螺絲 (G, 圖 10-1) 以調整螺絲 (F) 的位置使其如圖有 3mm 的突出。

鎖緊螺絲 (G, 圖 10-1) 後將針棒 (B) 轉至最高處, 放鬆兩顆螺絲 (H) 調整機針 (D) 的位置使針尖和針板的表面如圖有 23mm 的距離。

如 (圖 10-2) 所示, 正確的線環形成點在針從最低處往上升 1.7mm 到 2.0mm 時。

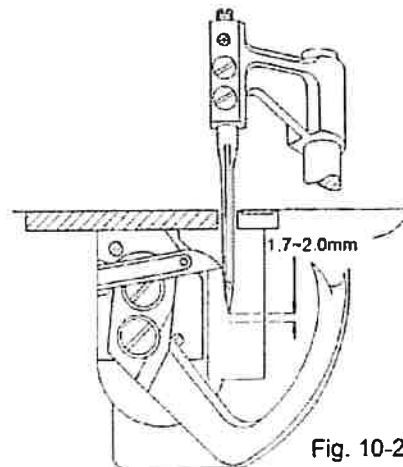


Fig. 10-2

11 ADJUSTING AFTER REPLACING LOWER LOOPER OR UPPER LOOPER

Replacing lower looper

Loosen screw (K, Fig. 11-1) to remove old lower looper (J) from guide (N). Insert new lower looper (J) into guide (N) and tighten it on holder (L). Be sure that lower looper tip (S) is parallelled to needle and has a clearance in 0.2mm to 0.3mm as illustration (Fig. 11-2).

Turn handwheel until position of lower looper and upper looper as illustration (Fig. 11-3). At this time, distance between lower looper tip (S) and needle plate is 80mm. Loosen screw (R, Fig. 10-1) to move lever (M) for adjusting.

Replacing upper looper

Bring upper looper (V, Fig. 10-1) to its lowest position. Loosen two screws (T) to replace upper looper. Be sure that upper looper and lower looper do not touch. If not, make following adjustment.

Adjusting lower looper:

Loosen two screws (O, Fig. 11-1) and then move guide (N) in the direction within 0.1mm as illustration .

Adjusting upper looper:

Loosen screw (U, Fig. 11-1) to adjust lever (M) by moving holder (L) in the direction as illustration.

11 更換下彎針或上彎針後的調整

更換下彎針

放鬆螺絲 (K, 圖 11-1) 將舊的下彎針 (J) 從導器 (N) 中卸載, 將新的下彎針 (J) 插入導器 (N) 並鎖在導座 (L)。請確認如 (圖 11-2) 所示, 下彎針的尖點 (S) 與機針完全平行且有 0.2mm~0.3mm 的空隙。

轉動手輪至下彎針和上彎針的位置如 (圖 11-3) 所示, 此時下彎針的尖點 (S) 與針板的距離為 80mm, 放鬆螺絲 (R, 圖 10-1) 可移動驅動杆 (M) 做調整。

更換上彎針

將上彎針 (V, 圖 10-1) 轉至最低處, 放鬆螺絲 (T) 更換上彎針。請確認上彎針與下彎針沒有碰觸, 若碰觸請依以下方式調整。

調整下彎針:

放鬆兩顆螺絲 (O, 圖 11-1) 並依圖示的方向移動導件 (N), 調整的範圍在 0.1mm 內。

調整上彎針:

放鬆螺絲 (U, 圖 11-1) 並依圖示方向移動導座 (L) 以調整驅動杆 (M)。

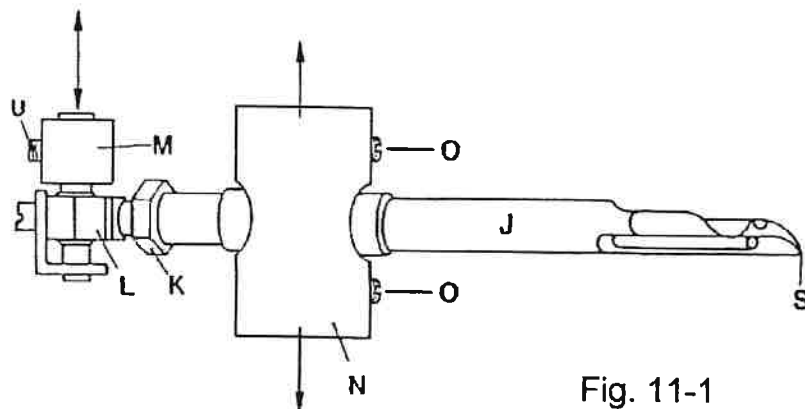


Fig. 11-1

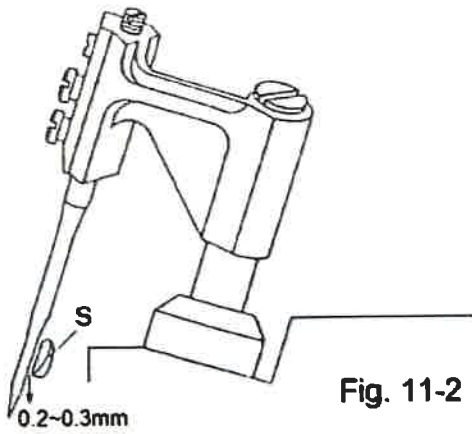


Fig. 11-2

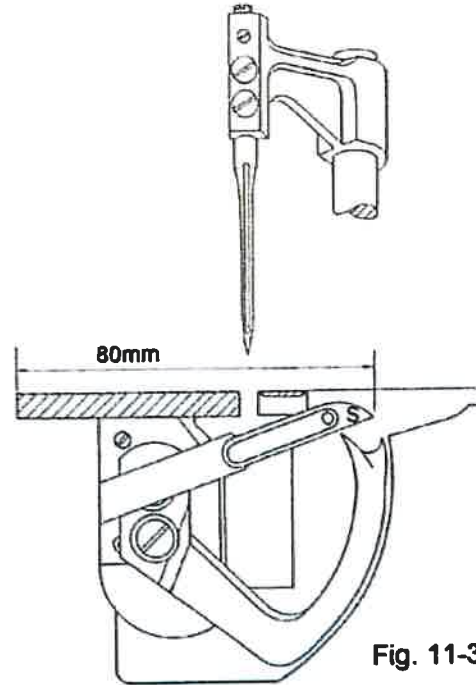


Fig. 11-3

12 SETTING PULLER (OPTION)

Assemble puller as illustration (Fig. 12)

12 安裝拉輪 (選購)

安裝拉輪如 (圖 12)。

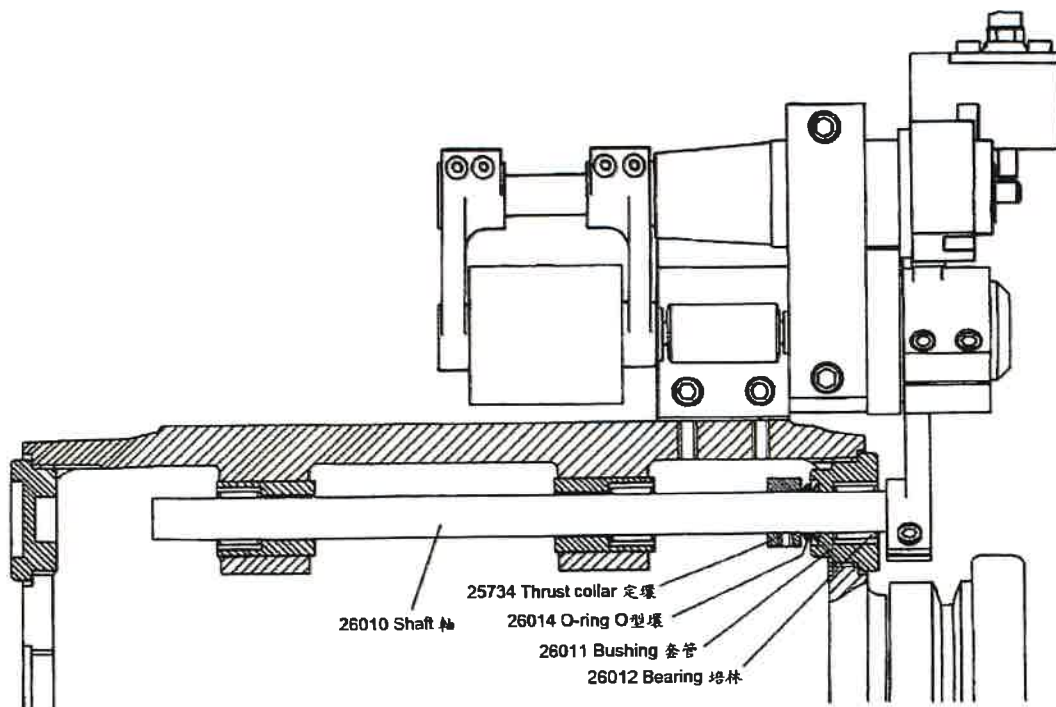
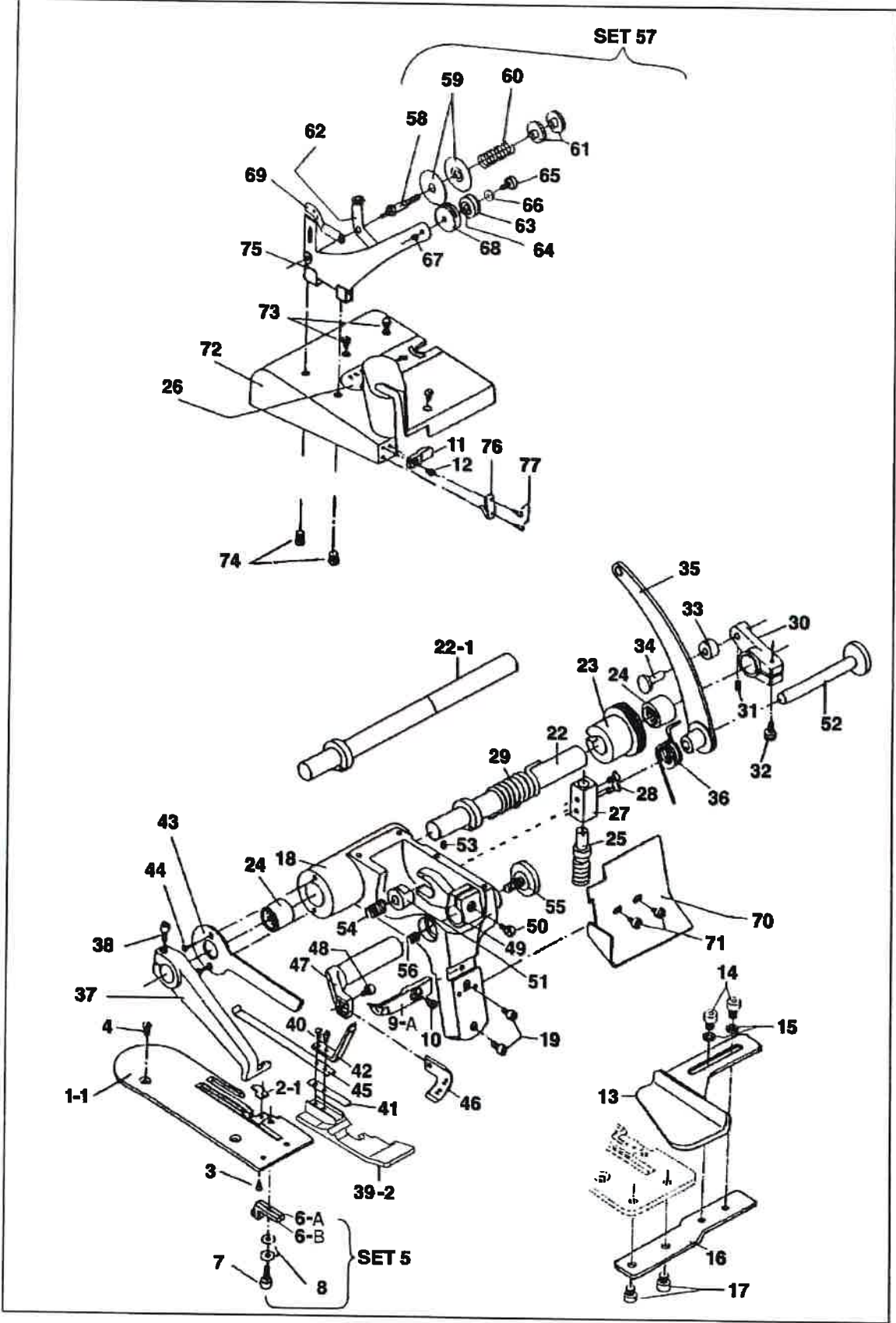


Fig. 12

PARTS LIST

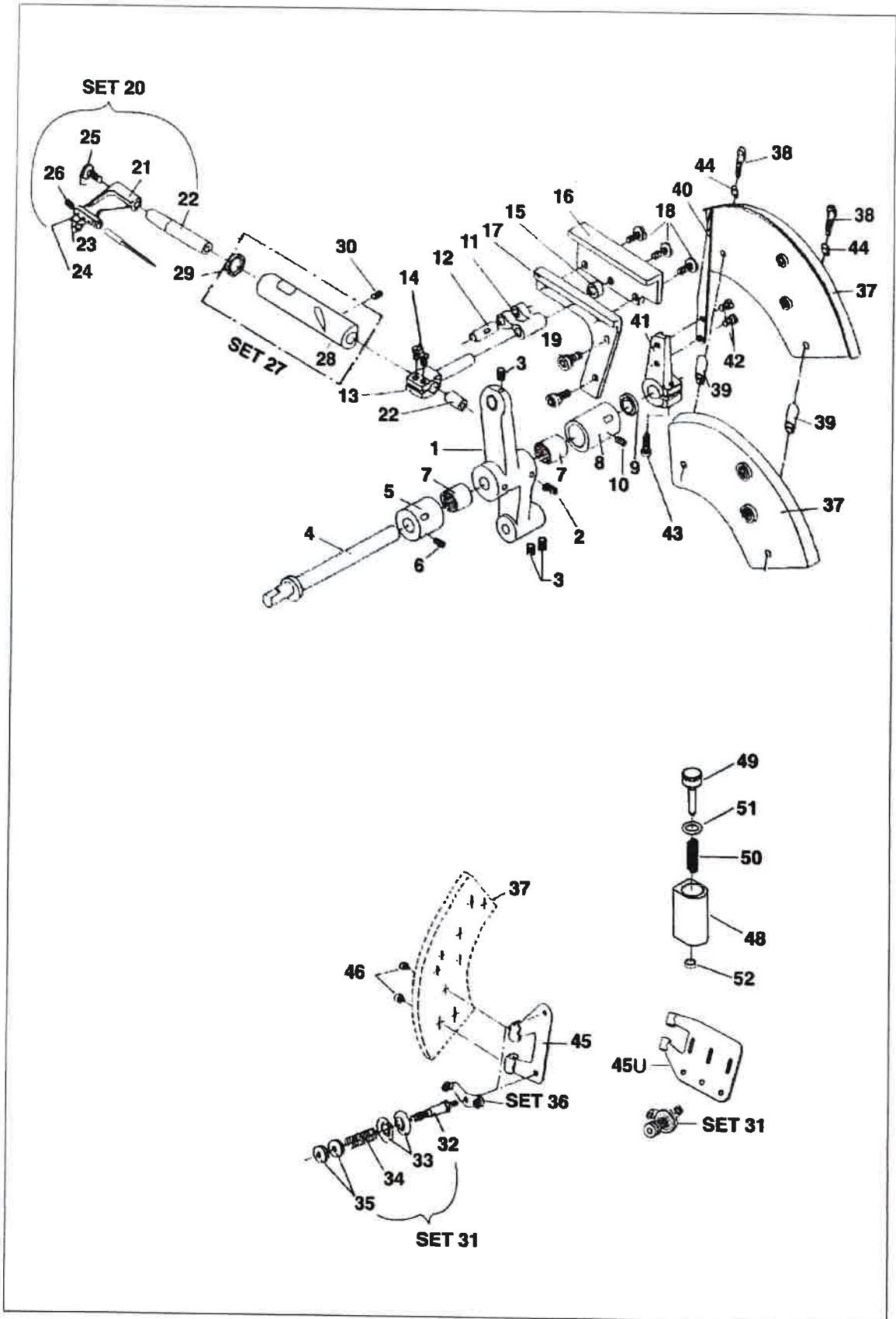
**ON ALL ORDERS, PLEASE INDICATE
MACHINE MODEL, PARTS NUMBER AND
PARTS NAME.**

**WHEN ORDER SPARE PARTS FOR LEFT SIDE
OVEREDGING MACHINE H-2500L, PLEASE
MENTION "L" AFTER THE REFERENCE
NUMBER.**



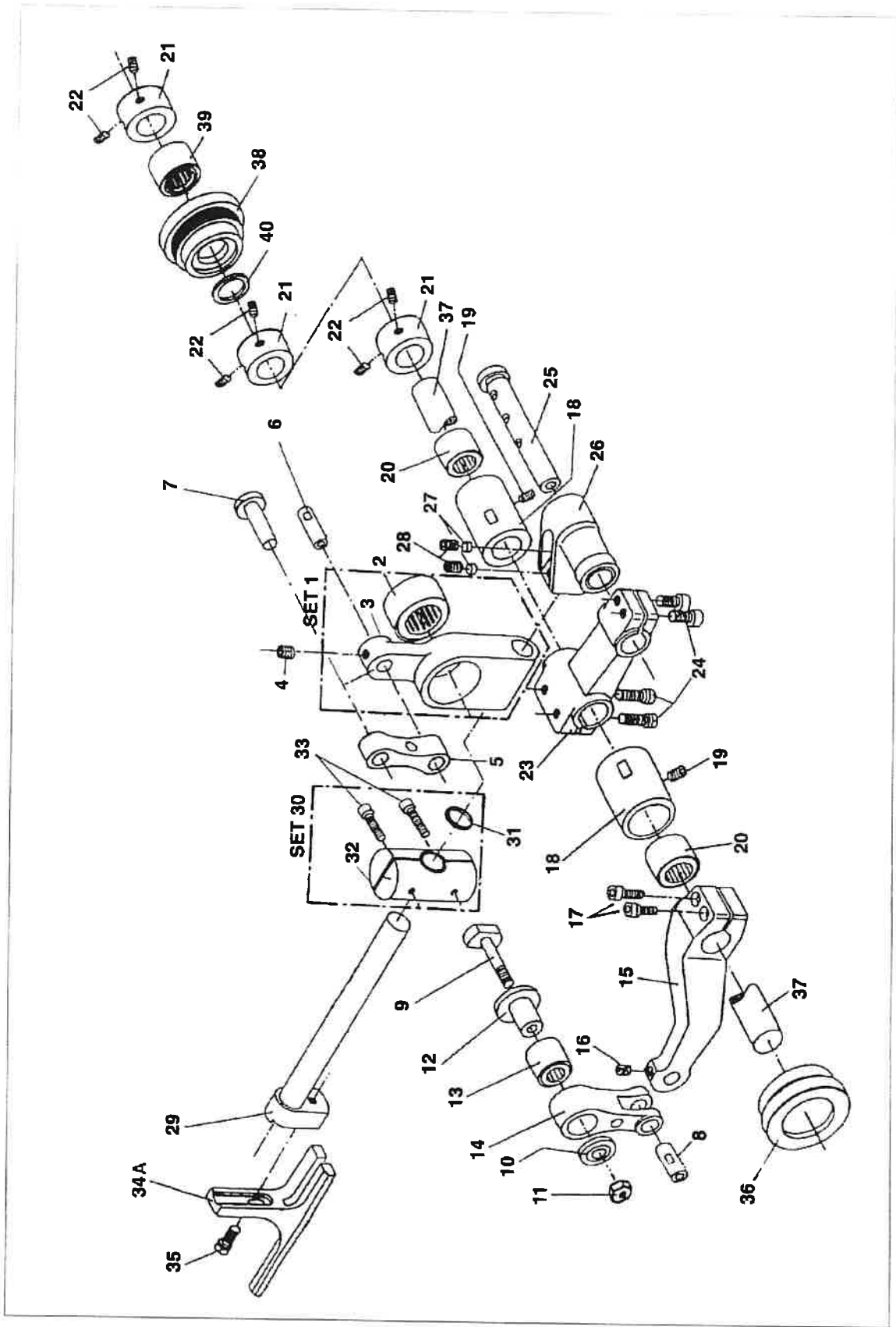
PRESSURE FOOT MECHANISM

Ref. No.	Part No.	Description	Ref. No.	Part No.	Description
1-1	25558-1	Needle plate	40	25583V	Screw
2-1	25558AS-1	Finger	41	25584	Spring
3	25558AV	Screw	42	25585	Holder for parallelism
4	25558V	Screw	43	25586	Connecting rod
			44	25586V	Screw
5	<u>SET 25559A</u>	Needle guide complete	45	25587	Folium
6-A	25559A	Needle guide A	46	25656	Upper knife, for -K
6-B	25559B	Needle guide B	47	25657	Upper knife holder, for -K
7	25559V	Screw	48	25657V	Screw, for -K
8	25559R	Washer	49	25658	Position lever, for -K
			50	25658V	Screw, for -K
9-A	25560H	Chain guide	51	25659	Slide block, for -K
10	25560V	Screw	52	25660	Shaft
11	25561	Tension releaser	53	25660V	Screw
12	25561V	Screw	54	25661	Feed spring, for -K
13	25562	Carpet guide	55	25662	Screw, for -K
14	25562V	Screw	56	25663	Spring, for -K
15	25562R	Washer			
16	25563	Guide holder	57	<u>SET 25760/1</u>	Tension complete
17	25563V	Screw	58	25760	Tension post
18	25571	Frame	59	25761	Tension disc
19	25571V	Screw	60	25762	Tension spring
20			61	25764	Nut
21					
22	25572	Lever shaft	62	<u>SET 25765</u>	Thread guide
22-1	25572-1	Lever shaft, for fitting foot lifer			
23	25573	Bushing	63	25768	Roller
24	25574	Bearing	64	25769	Bearing
25	25575	Regulating screw	65	25770V	Screw
26	25575A	Label	66	25770R	Washer
27	25576	Regulating screw holder	67	25771E	Nut
28	25576V	Screw	68	25772	Roller holder
29	25577	Foot lifter spring	69	25773	Thread guide
30	25578	Rise lever	70	25833	Protective plate
31	25578V	Screw	71	25833V	Screw
32	25578VL	Screw	72	25835	Cover
33	25579	Roller	73	25835V	Screw
34	25580	Roller stud	74	25836V	Screw
35	25581	Presser foot lever			
36	25581C	Return spring	75	SET 25853	Tension holder
37	25582	Lever			
38	25582V	Screw	76	25590	Knife
39-2	25583-2	Pressure foot	77	25590V	Screw



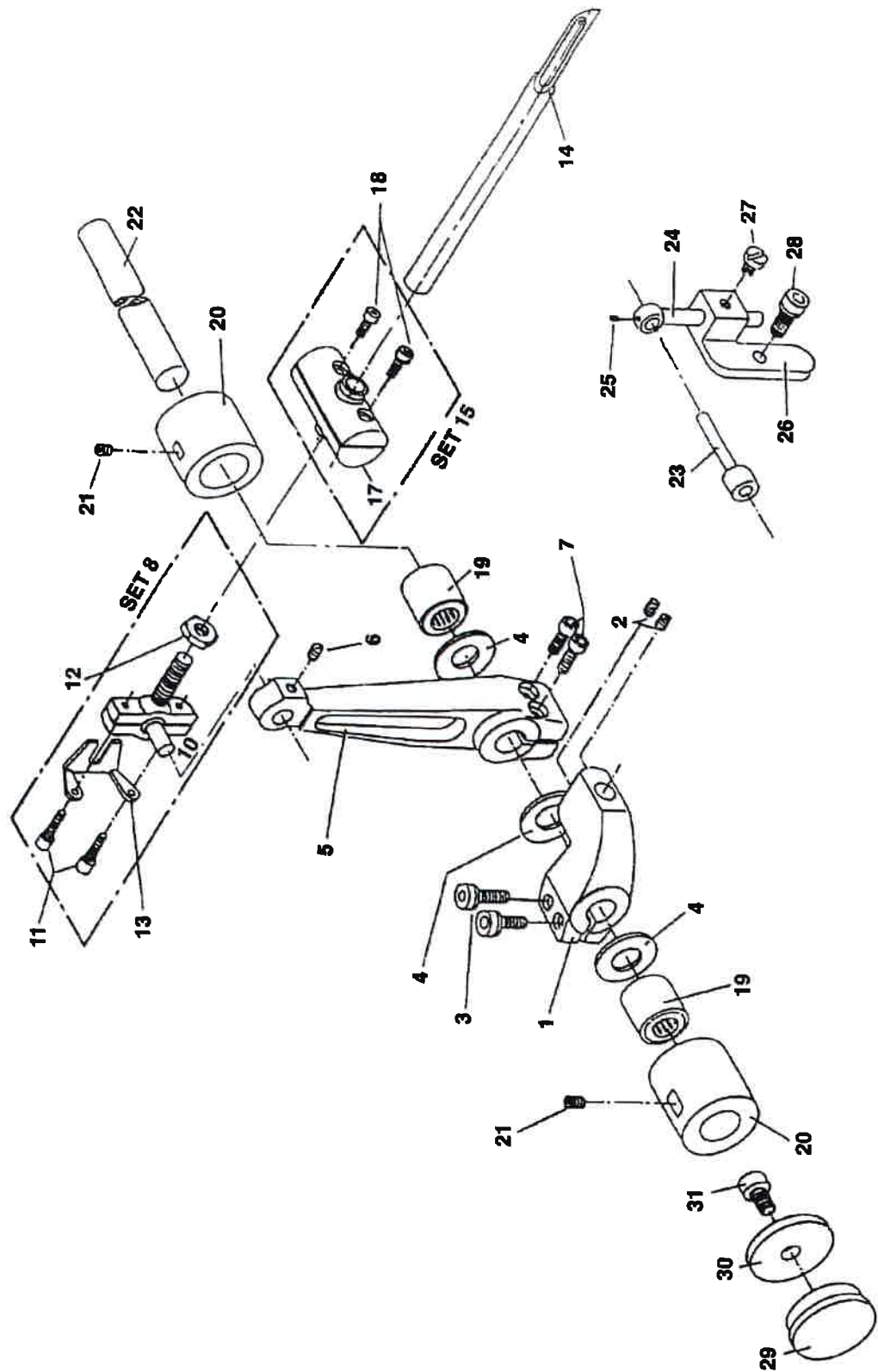
NEEDLE BAR MECHANISM

Ref. No.	Part No.	Description	Ref. No.	Part No.	Description
1	25545	Needle bar lever	37	25787	Thread guide holder
2	25545V	Screw	38	25787V	Screw
3	25545VC	Screw	39	25789	Bushing
4	25546	Eccentric shaft	40	25799	Thread take-up
5	25547	Bushing	41	25800	Thread take-up lever
6	25547V	Screw	42	25800V	Screw
7	25548	Bearing	43	25800VL	Screw
8	25549	Bushing	44	25805R	Washer
9	25549B	Seal	45	25837	Tension holder
10	25549V	Screw	45U	25837U	Tension holder, for fitting foot lifer
11	25551	Connection link	46	25837V	Screw
12	25552	Link shaft	47		
13	25553	Connection stud			
14	25553V	Screw			<u>Tension opener (optional)</u>
15	25554	Guide roller	48	25858+B	Housing
16	25555A	Needle bar guide A	49	25859	Piston
17	25555B	Needle bar guide B	50	25862	Spring
18	25555AV	Screw	51	25861	O-ring
19	25555BV	Screw	52	25860	Bushing
20	<u>SET 25556</u>	Needle clamp assembly			
21	25556	Needle clamp			
22	25556B	Needle bar			
23	25556V	Screw			
24	25556VC	Screw			
25	25556BV	Screw			
26	25556VC	Screw			
27	<u>SET 25557</u>	Needle bar bushing			
28	25557	Needle bar bushing			
29	25557B	Seal			
30	25557V	Screw			
31	<u>SET 25760</u>	Tension complete			
32	25760	Tension post			
33	25761	Tension disc			
34	25763	Tension spring			
35	25764	Nut			
36	<u>SET 25765</u>	Thread guide plate			



FEEDDOG MECHANISM

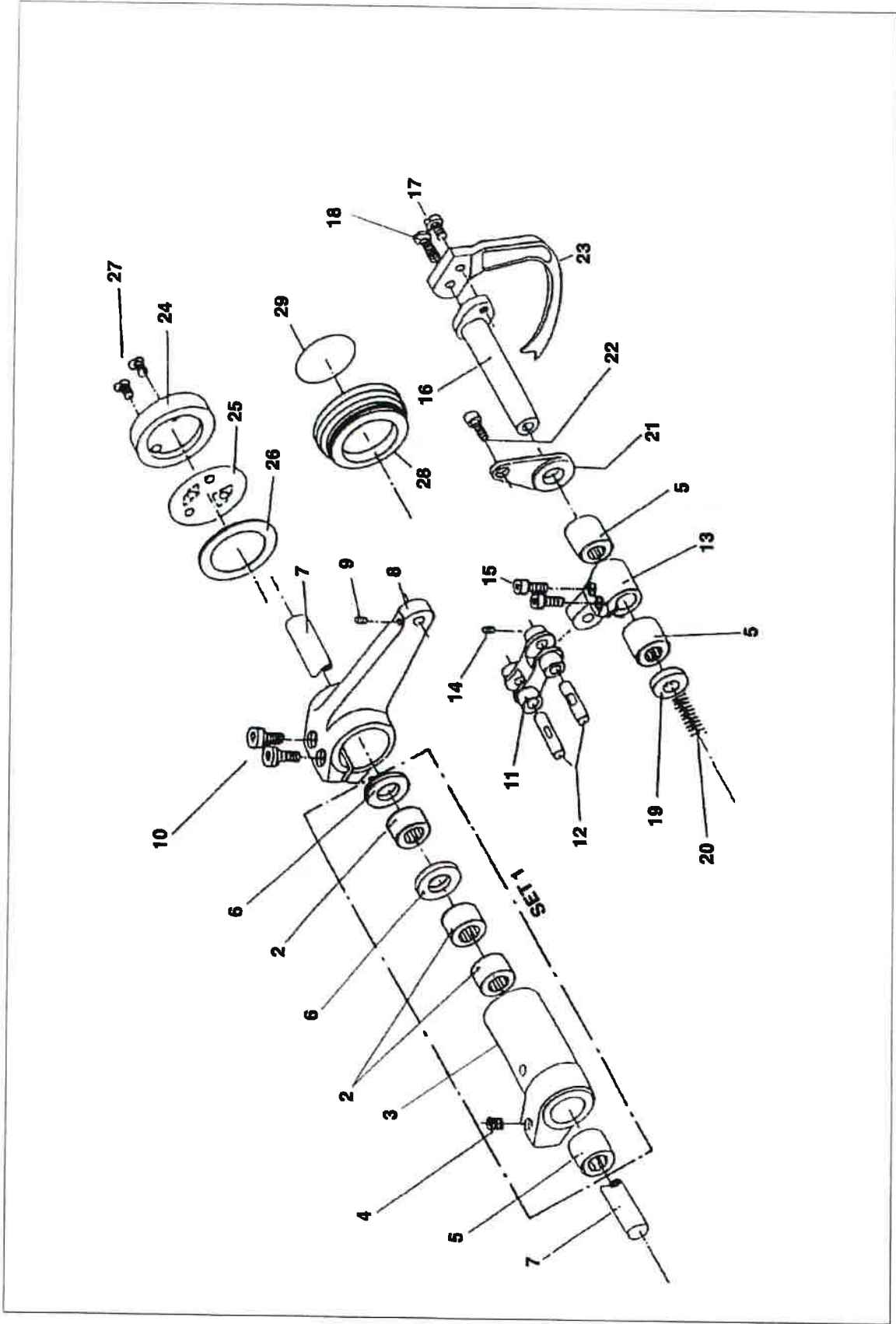
Ref. No.	Part No.	Description	Ref. No.	Part No.	Description
1	<u>SET 25641</u>	Lower knife driving link complete	37	26010	Shaft, for fitting puller
2	25640	Bearing	38	26011	Bushing, for fitting puller
3	25641	Lower knife driving link	39	26012	Bearing, for fitting puller
			40	26014	O-ring, for fitting puller
4	25641V	Screw			
5	25642	Driving link, for -K			
6	25643	Lower shaft, for -K			
7	25645	Stud, for -K			
8	25699	Pin			
9	25721	Feed across regulator			
10	25722	Washer			
11	25722E	Nut			
12	25724	Bearing bushing			
13	25725	Bearing			
14	25726	Feed driving rod			
15	25728	Feed driving lever			
16	25728V	Screw			
17	25728VL	Screw			
18	25730	Bushing			
19	25730V	Screw			
20	25731	Bearing			
21	25734	Thrust collar			
22	25734V	Screw			
23	25735	Lever			
24	25735V	Screw			
25	25736	Stud			
26	25737	Base			
27	25737P	Protection			
28	25737V	Screw			
29	25739	Feeddog shaft			
30	<u>SET 25743</u>	Complete feeddog shaft guide			
31	25742J	O-ring			
32	25743	Feeddog shaft guide			
33	25743V	Screw			
34A	25744A	Feeddog			
35	25744V	Screw			
36	25845	Plug			



LOWER LOOPER MECHANISM

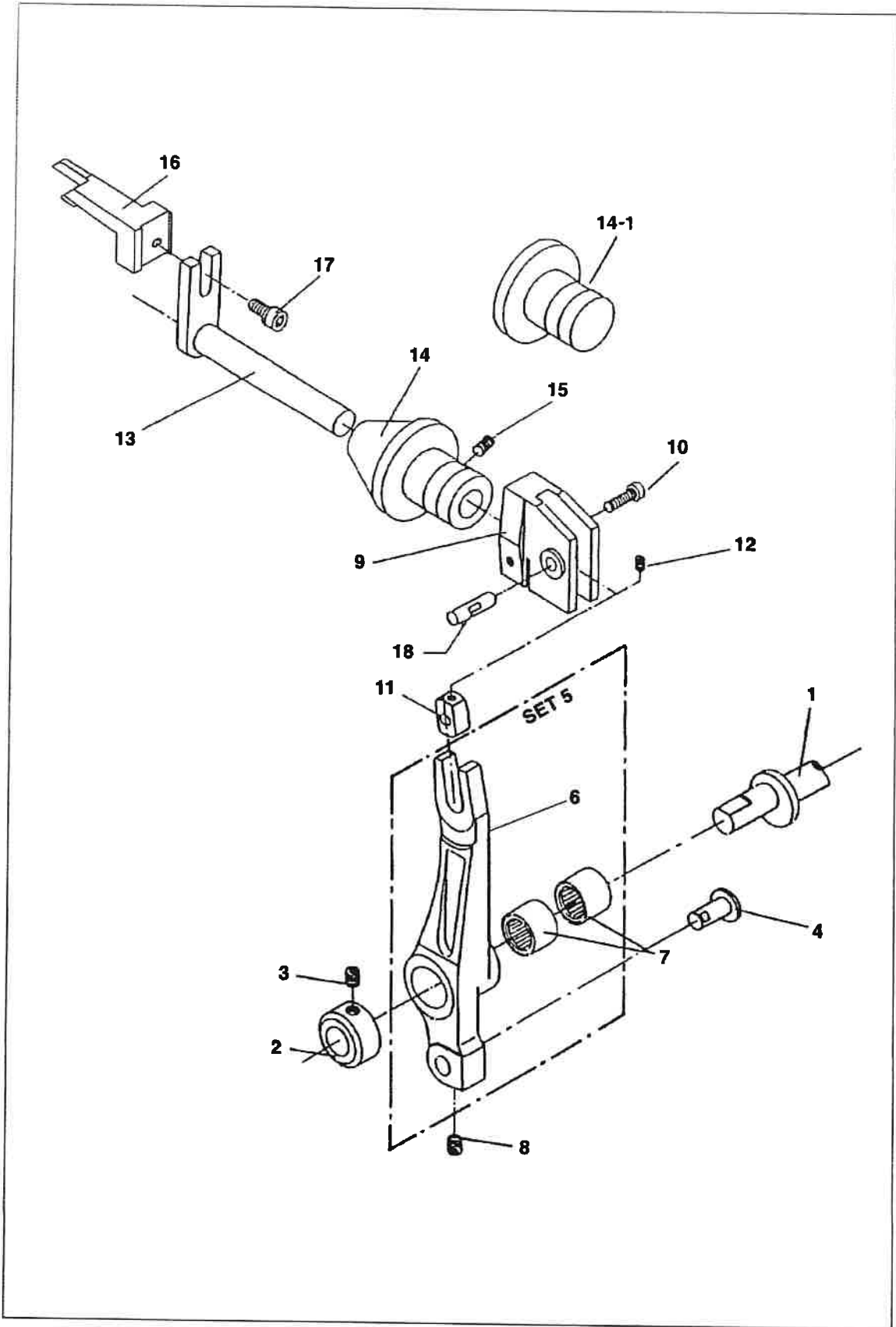
Ref. No.	Part No.	Description
1	25515	Small lever
2	25515V	Screw
3	25515VL	Screw
4	25516	Washer
5	25518	Driving lever
6	25518V	Screw
7	25518VL	Screw
8	<u>SET 25520</u>	Complete ball joint
9	25519*	Looper ball
10	25520*	Ball joint
11	25520V	Screw
12	25521	Nut
13	25522	Ball joint guide fork
14	25523	Lower looper, for -2502/-2503
15	<u>SET 25525</u>	Under looper guide complete
16	25524*	Ball
17	25525*	Under looper ball joint
18	25525V	Screw
19	25686	Needle bearing
20	25690	Bushing
21	25690V	Screw
22	25692	Shaft
23	25802	Thread guide
24	25803	Thread guide supporting shaft
25	25803V	Screw
26	25804	Thread guide holder
27	25804V	Screw
28	25804VL	Screw
29	25852	Plug
30	25852A	Washer
31	25852V	Screw

* only complete set is available



UPPER LOOPER MECHANISM

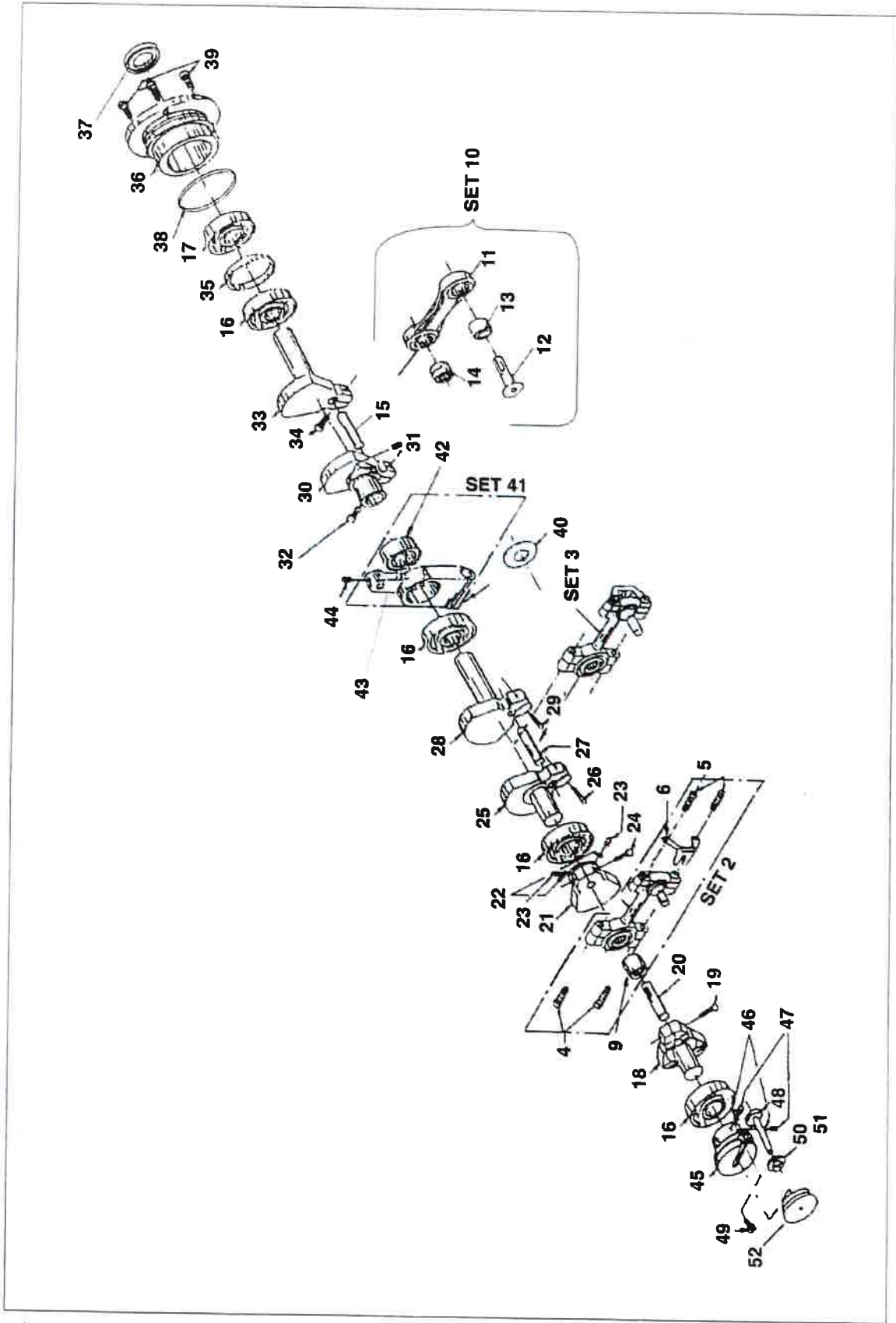
Ref. No.	Part No.	Description
1	<u>SET 25685</u>	Complete intermediary assembly
2	25648	Bearing
3	25685	Intermediate lever
4	25685V	Screw
5	25686	Bearing
6	25687	Washer
7	25692	Shaft
8	25695	Big lever
9	25695V	Screw
10	25695VL	Screw
11	25696	Connection link
12	25697	Link pin
13	25698	Small lever
14	25698V	Screw
15	25698VL	Screw
16	25700	Upper looper shaft
17	25700V	Screw
18	25700VL	Screw
19	25703	Washer
20	25703R	Spring
21	25704	Thrust plate
22	25704V	Screw
23	25705	Upper looper, for -2501/-2502
24	25706	Oil window
25	25706A	Sticker
26	25706J	Packing
27	25706V	Screw
28	25834	Plug
29	25844B	Sticker



CUTTING DEVICE MECHANISM -K (OPTION)

Ref. No.	Part No.	Description
1	25546	Eccentric shaft
2	25546B	Collar
3	25546BV	Screw
4	25645	Stud
5	<u>SET 25647</u>	Lower knife lever complete
6	25647	Lower knife lever
7	25648	Bearing
8	25647V	Screw
9	25650	Slide block guide
10	25650V	Screw
11	25652	Slide block
12	25652V	Screw
13	25653	Lower knife shaft
14	25654	Lower knife bushing
14-1	25654-1	Plug, for without -K
15	25654V	Screw
16	25655	Lower knife
17	25655V	Screw
18	25697	Link pin

Upper knife (see page no. 1)

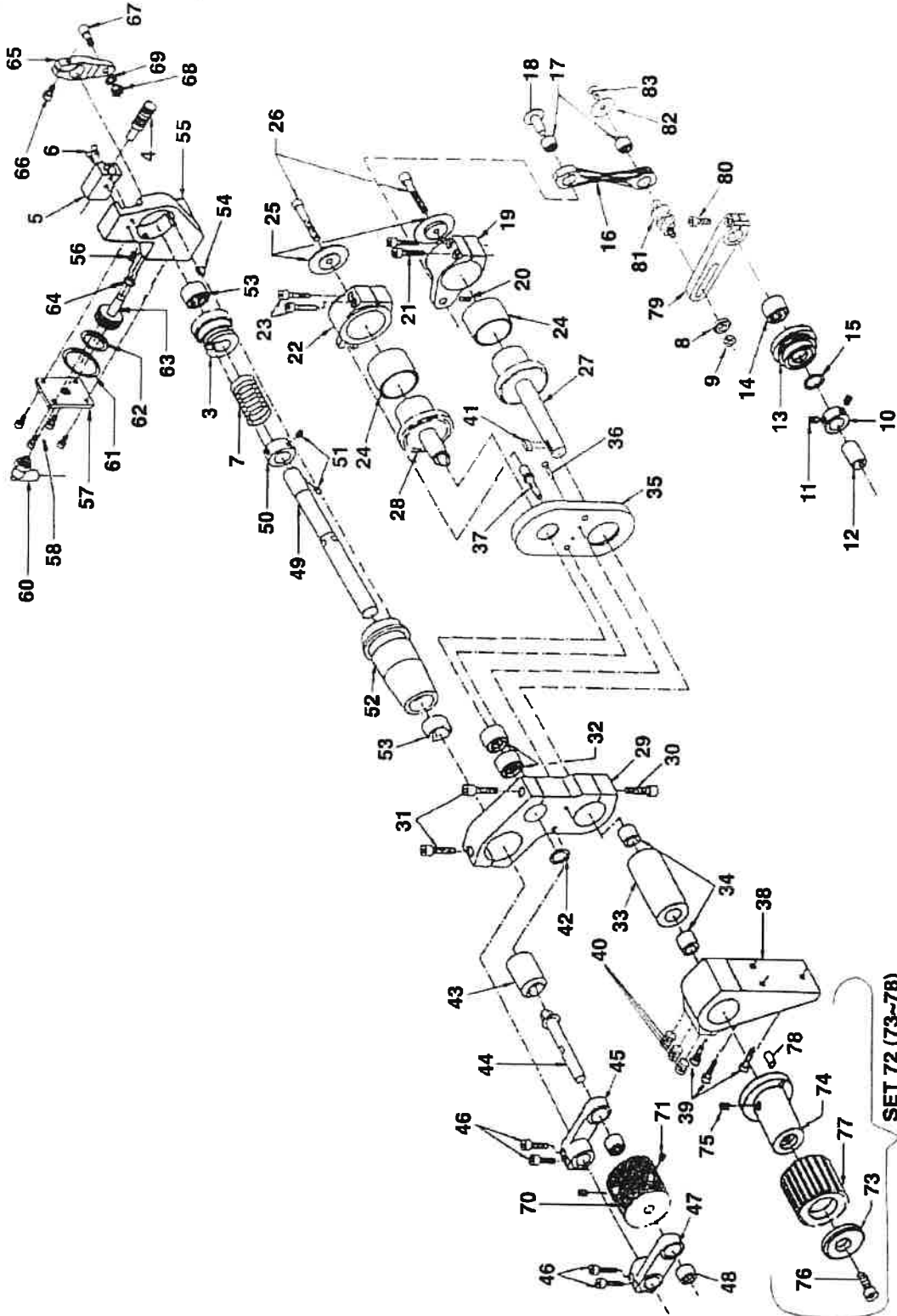


CRANK SHAFT

Ref. No.	Part No.	Description	Ref. No.	Part No.	Description
1			38	25620/OR	O-ring
2	<u>SET 25511</u>	Connecting rod complete	39	25620V	Screw
3	25511	Connecting rod	40	25640A	Washer
4	25511V	Clamp screw			
5	25511VL	Clamp screw	41	<u>SET 25641</u>	Lower knife driving link
6	25512	Ball joint guide fork	42	25640	Bearing
7	25513*	Ball	43	25641	Lower knife driving link
8	25514*	Ball			
9	25604	Bearing	44	25641V	Screw
			45	25720	Eccentric
10	<u>SET 25511A</u>	Complete rod	46	25720P	Protection
11	25511A	Rod	47	25720V	Screw
12	25511B	Stud	48	25721	Feed across regulator
13	25517	Bushing	49	25721V	Screw
14	25604	Bearing	50	25722	Washer
15	25608	Pin	51	25722E	Nut
			52	25844A	Plug
16	25601	Bearing			
17	25601A	Bearing			
18	25602	Crank			
19	25602V	Screw			
20	25603	Pin			
21	25605	Crank			
22	25605P	Protection			
23	25605V	Screw			
24	25605VL	Screw			
25	25607	Crank			
26	25607V	Screw			
27	25608	Pin			
28	25610	Crank			
29	25610V	Screw			
30	25612	Crank			
31	25612V	Screw			
32	25612VL	Screw			
33	25615	Crank			
34	25615V	Screw			
35	25617	Ring			
36	25620	Bearing bushing			
37	25620B	Seal			

* only complete set is available

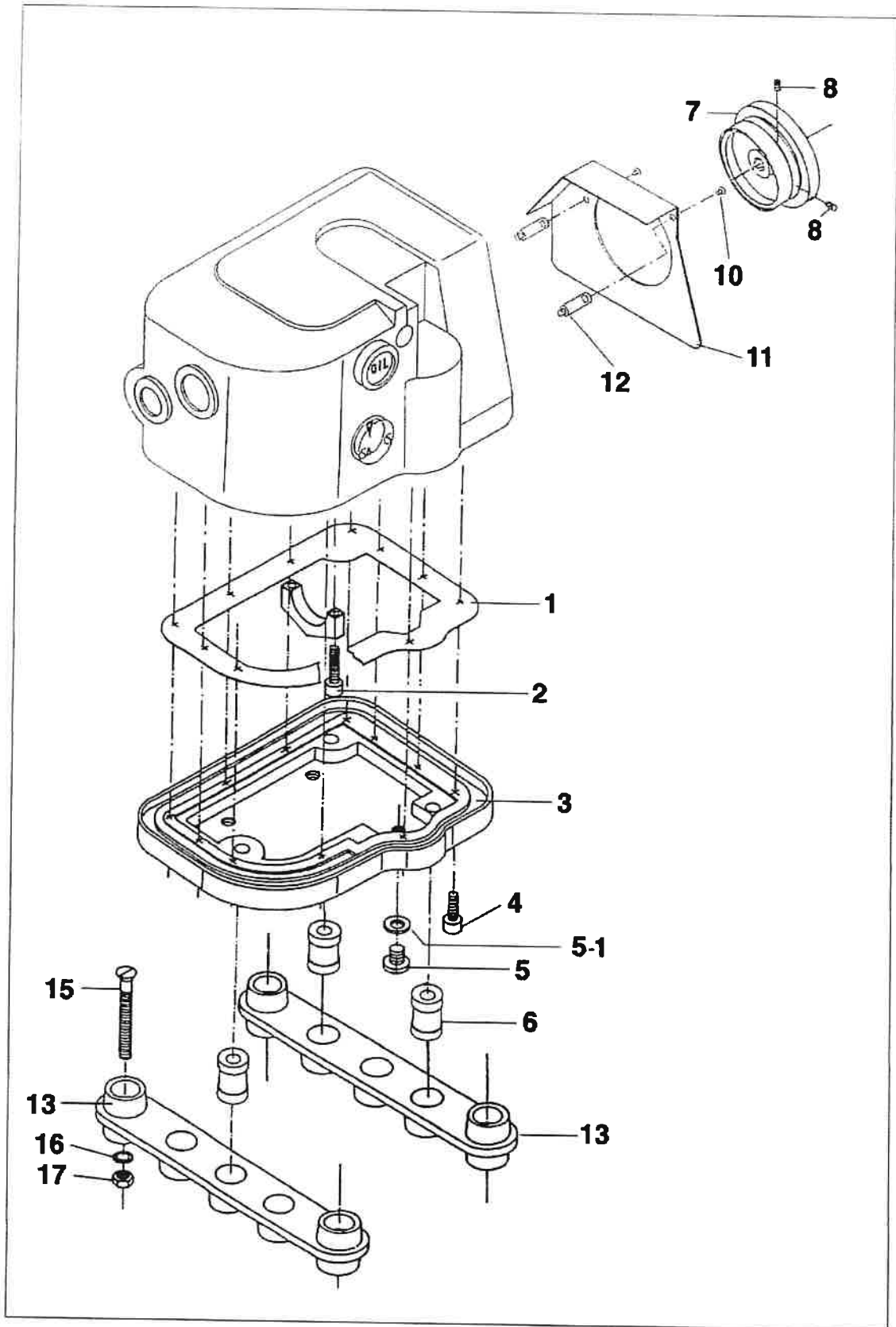
SET 59 (60-69)



SET 72 (73-78)

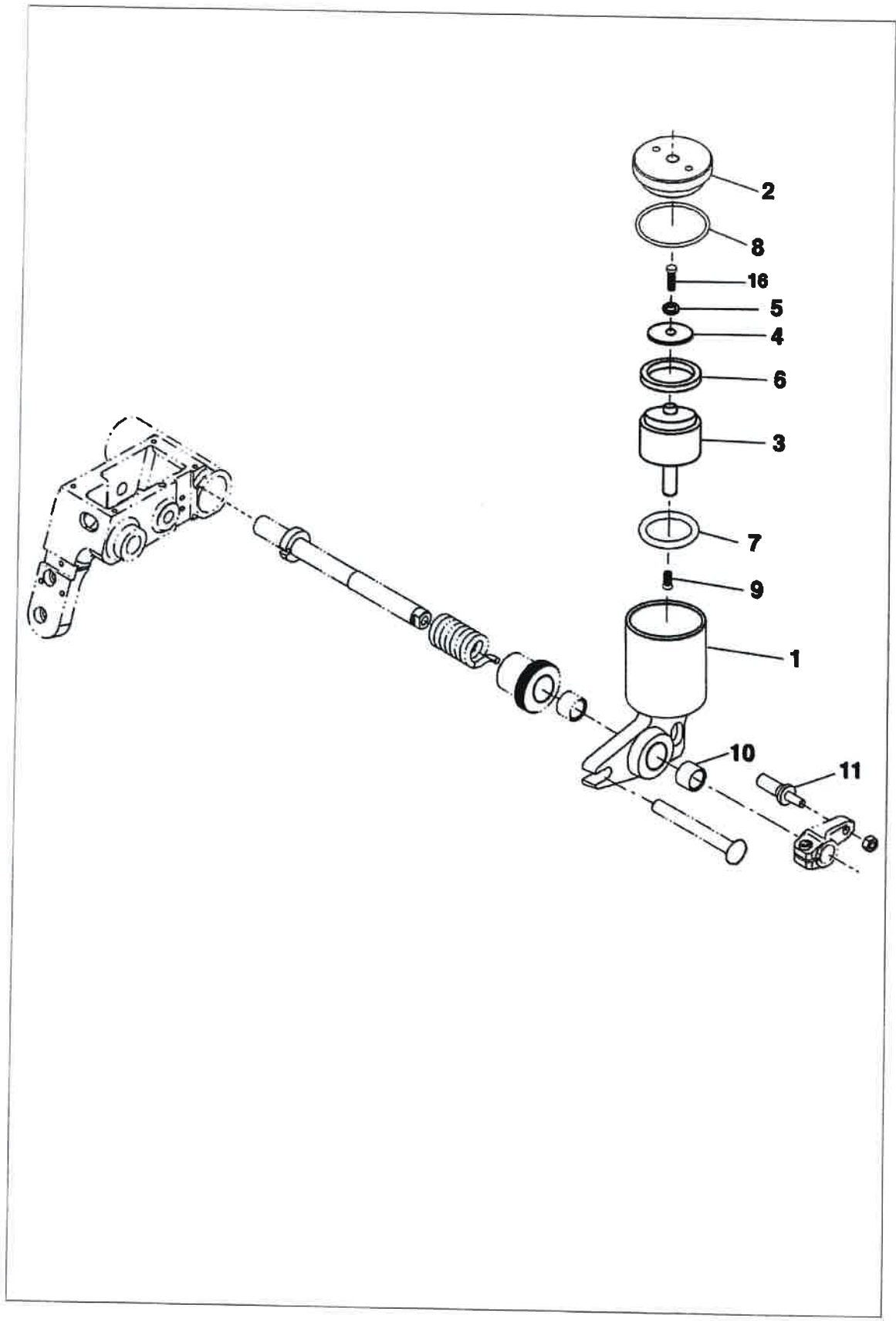
PULLER H-2600 (OPTION)

Ref. No.	Part No.	Description	Ref. No.	Part No.	Description
1	25133	Lever	45	26041R	Lever
2	25133V	Screw	46	26041V	Screw
3	25573	Bushing	47	26041L	Lever
4	25575	Regulating screw	48	26042	Bearing
5	25576	Screw holder	49	26043	Lever shaft
6	25576V	Screw	50	26043A	Thrust collar
7	25577	Foot lift spring	51	26043AV	Screw
8	25722	Washer	52	26044	Bushing
9	25722E	Nut	53	26045	Bearing
10	25734	Thrust collar	54	26047	Block
11	25734V	Screw	55	26050	Piston frame
12	26010	Big shaft	56	26050V	Screw
13	26011	Bushing	57	26051	Cover
14	26012	Bearing	58	26051V	Screw
15	26014	Seal ring			
16	26017	Lever	59	<u>SET 26054</u>	Pneumatic cylinder
17	26018	Bushing	60	25916A	Elbow
18	26019	Pin	61	26052	O-ring
19	26020	Lever	62	26053	O-ring
20	26020V	Screw	63	26054	Piston
21	26020VL	Screw	64	26055	O-ring
22	26021	Lever	65	26056	Lever
23	26021V	Screw	66	26056V	Screw
24	26022	Wheel	67	26057	Pin
25	26023	Washer	68	26057E	Nut
26	26023V	Screw	69	26057R	Washer
27	26025	Lower shaft			
28	26026	Upper shaft	70	26060	Upper wheel
29	26027	Frame	71	26060V	Screw
30	26027V	Screw			
31	26027VL	Screw	72	<u>SET 26062</u>	Lower wheel
32	26028	Bearing	73	26023	Washer
33	26029	Bushing	74	26061	Bushing
34	26030	Bearing	75	26061V	Screw
35	26031	Gear over	76	26061VL	Screw
36	26031V	Screw	77	26062	Feed roll
37	26032	Pin	78	27442	Pin
38	26033	Fixation support			
39	26033V	Screw	79	26070	Lever
40	26033VL	Screw	80	26070V	Screw
41	26034	Block	81	26071	Stud
42	26036	Snap ring	82	27324	Washer
43	26037	Bushing	83	27324V	Screw
44	26038	Cardan			



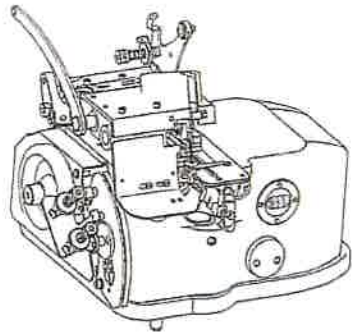
COVER

Ref. No.	Part No.	Description
1	25839J	Machine gasket
2	25830V	Screw
3	25839	Cover
4	25839V	Screw
5	25916AB	Screw
5-1	25916AB-1	Washer
6	25840	Rubber pad
7	25621	Handwheel
8	25621V	Screw
9		
10	25624V	Screw
11	25624	Belt guard
12	25625	Connecting rod
13	25841	Machine stand
14		
15	25841V	Screw
16	25841R	Washer
17	25841E	Nut



PNEUMATIC FOOT LIFTER -U (OPTION)

Ref. No.	Part No.	Description
1	25910	Cylinder
2	25906	Cylinder cover
3	25911	Piston
4	25912	Washer
5	25913	Washer
6	25911B	Seal
7	25914	O-ring
8	25915	O-ring
9	25911V	Screw
10	25920	Bushing
11	25921	Pin
12		
13		
14		
15		
16	25913V	Screw



1-1L



1-2L



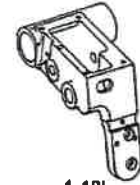
1-6-AL
1-6-BL



1-9L



1-13L



1-18L



1-27L



1-29L



1-35L



1-36L



1-37L



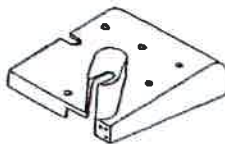
1-39-1L



1-46L



1-70L



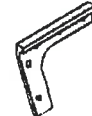
1-72L



3-1L



3-16L



3-17L



3-21L



3-28L



3-45L



5-15L



5-26L



5-34L



7-1L



7-5L



7-14L



7-26L



9-13L



9-23L



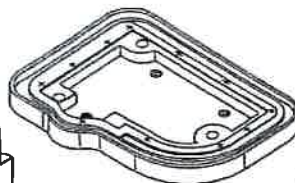
11-6L



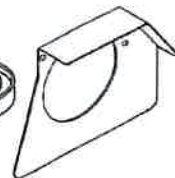
11-16L



15-55L



17-3L



17-11L

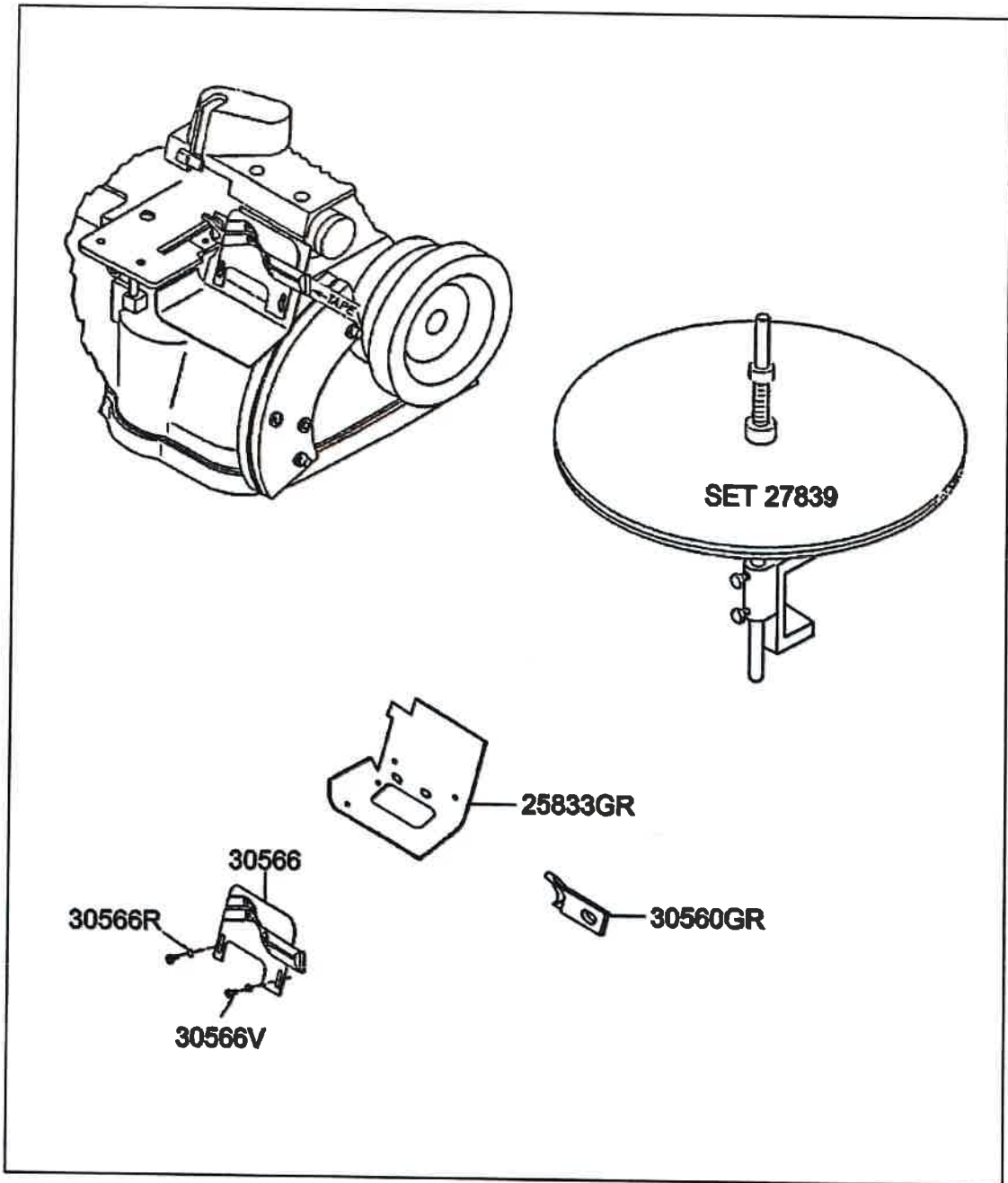


19-1L

EXCLUSIVE PARTS FOR LEFTHAND MACHINE H-2500L H-2600L

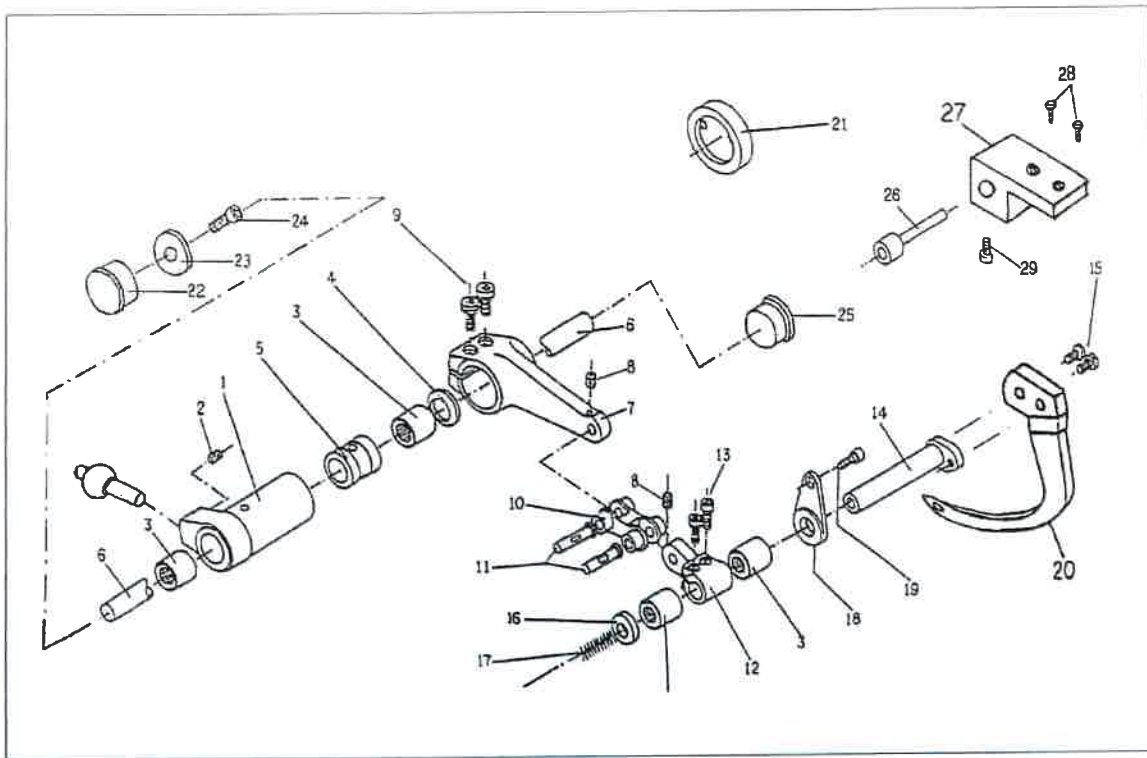
Ref. No.	Part No.	Description
1-1L	25558L	Needle plate
1-2L	25558ASL	Finger
1-6-AL	25559AL	Needle guide A
1-6-BL	25559BL	Needle guide B
1-9L	25560L	Chain guide
1-13L	25562L	Carpet guide
1-18L	25571L	Frame
1-27L	25576L	Regulating screw holder
1-29L	25577L	Foot lifter spring
1-35L	25581L	Presser foot lever
1-36L	25581CL	Return spring
1-37L	25582L	Lever
1-39-1L	25583-1L	Pressure foot
1-46L	25656L	Upper knife
1-70L	25833L	Protective plate
1-72L	25835L	Cover
3-1L	25545L	Needle bar lever
3-16L	25555AL	Needle bar guide A
3-17L	25555BL	Needle bar guide B
3-21L	25556L	Needle clamp
3-28L	25557L	Needle bar bushing
3-45L	25837L	Tension holder
5-15L	25728L	Feed driving lever
5-26L	25737L	Base
5-34L	25744L	Feeddog
7-1L	25515L	Small lever
7-5L	25518L	Driving lever
7-14L	25523L	Lower looper
7-26L	25804L	Thread guide holder
9-13L	25698L	Small lever
9-23L	25705L	Upper looper
11-6L	25647L	Lower knife lever
11-16L	25655L	Lower knife
15-55L	26050L	Piston frame
17-3L	25839L	Cover
17-11L	25624L	Belt guard
19-1L	25910L	Cylinder

TAPE INSERTION (OPTION)



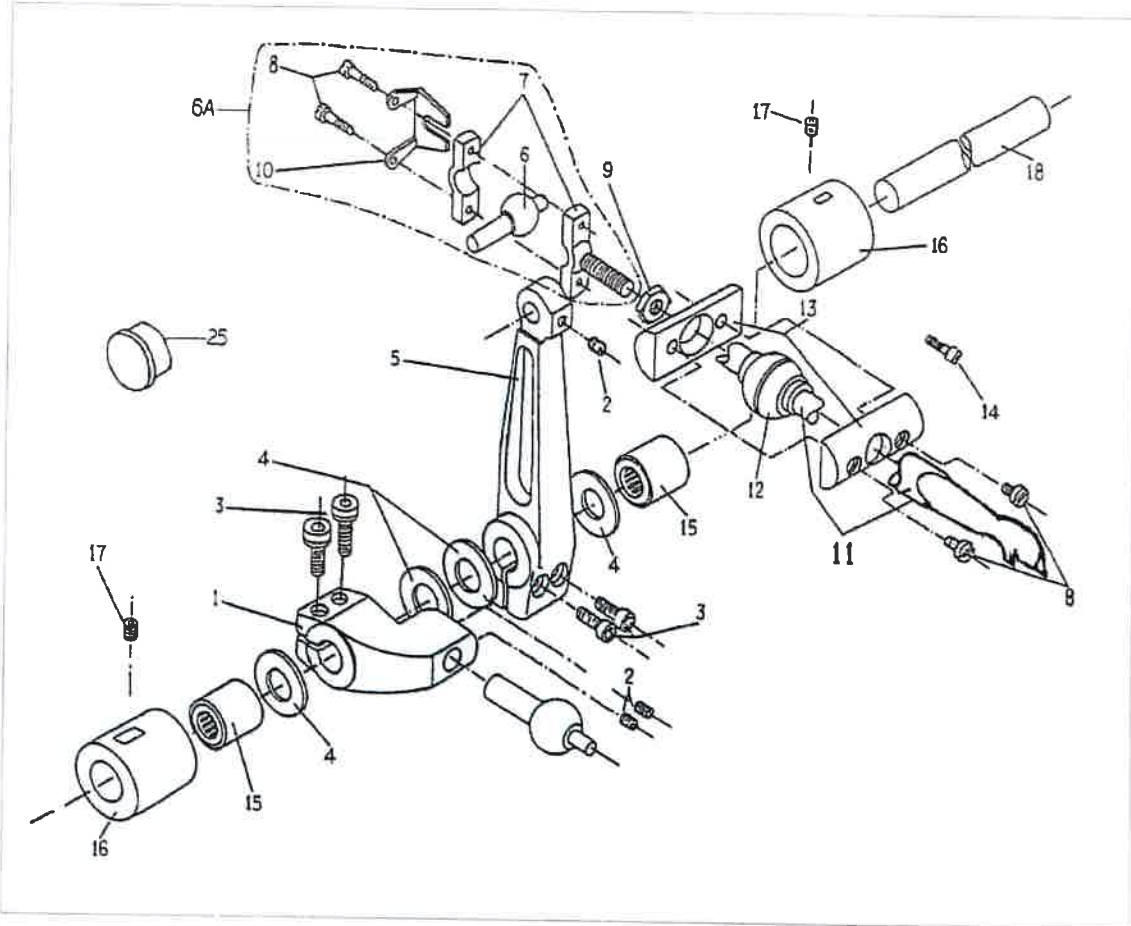
Ref. No.	Part No.	Description
	30566	Tape lapper
	30566R	Washer
	30566V	Screw
	25833GR	Protective plate
	30560GR	Chain guide
	SET 27839	Tape holder

UPPER LOOPER MECHANISM – THREE THREAD



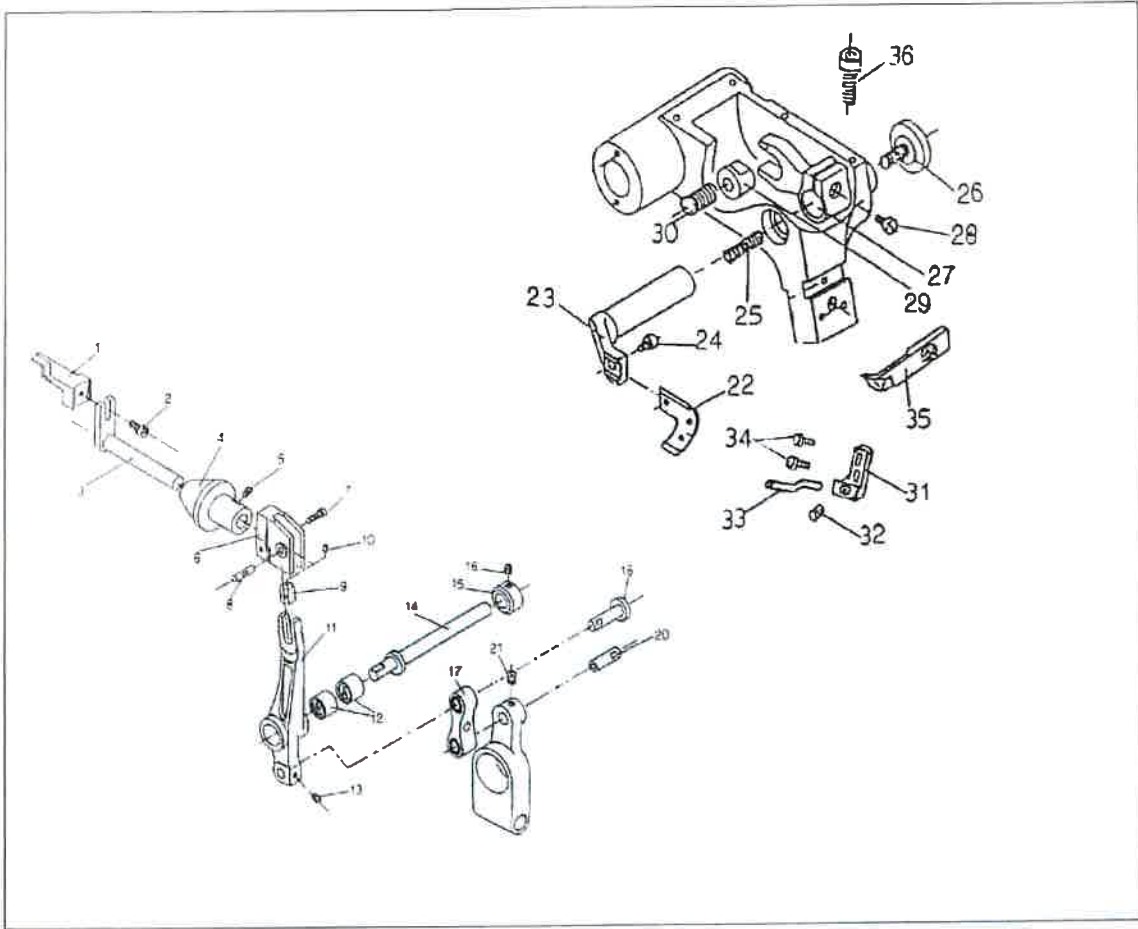
Ref. No.	Part No.	Description
20	25705/3	Upper looper
27	25804/3	Thread guide holder

LOWER LOOPER MECHANISM - SINGLE THREAD



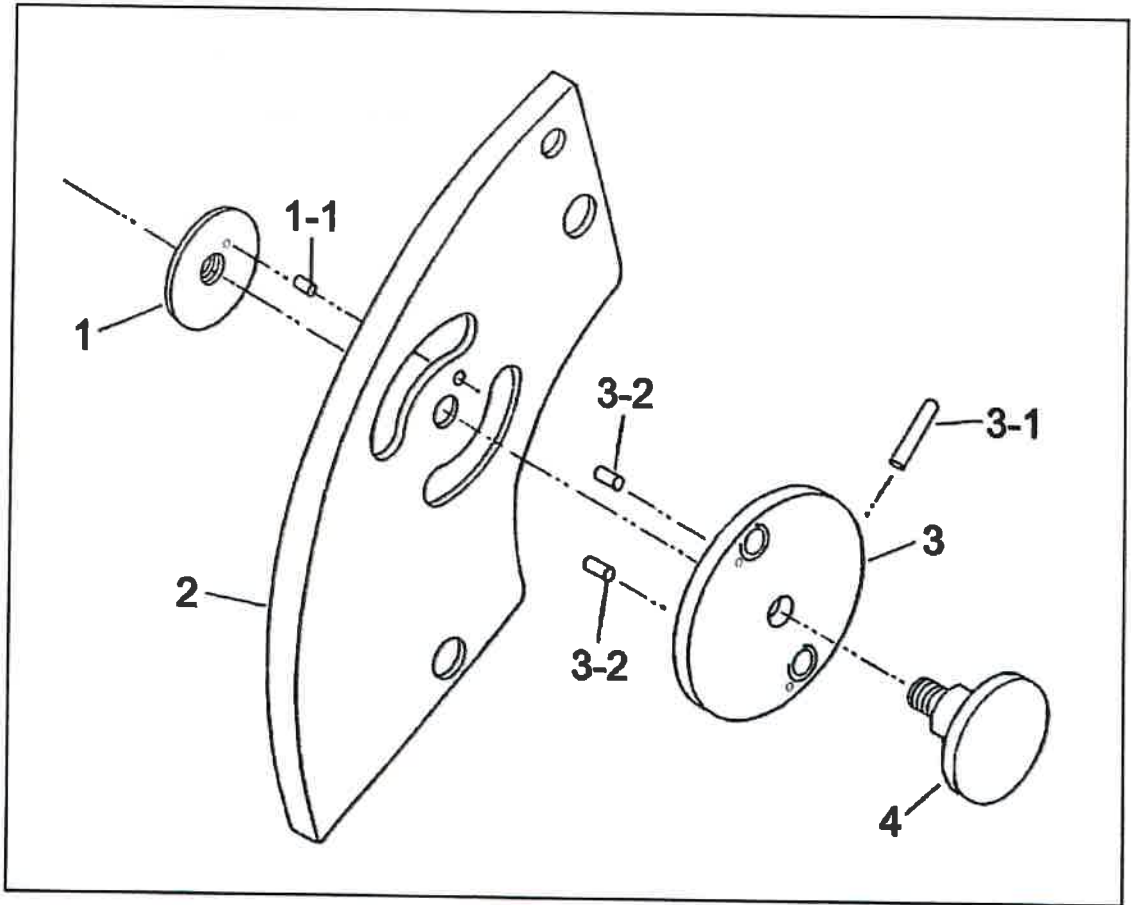
Ref. No.	Part No.	Description
11	25523/1	Lower looper

EXCLUSIVE PARTS FOR ABUTTED SEAM -2501K



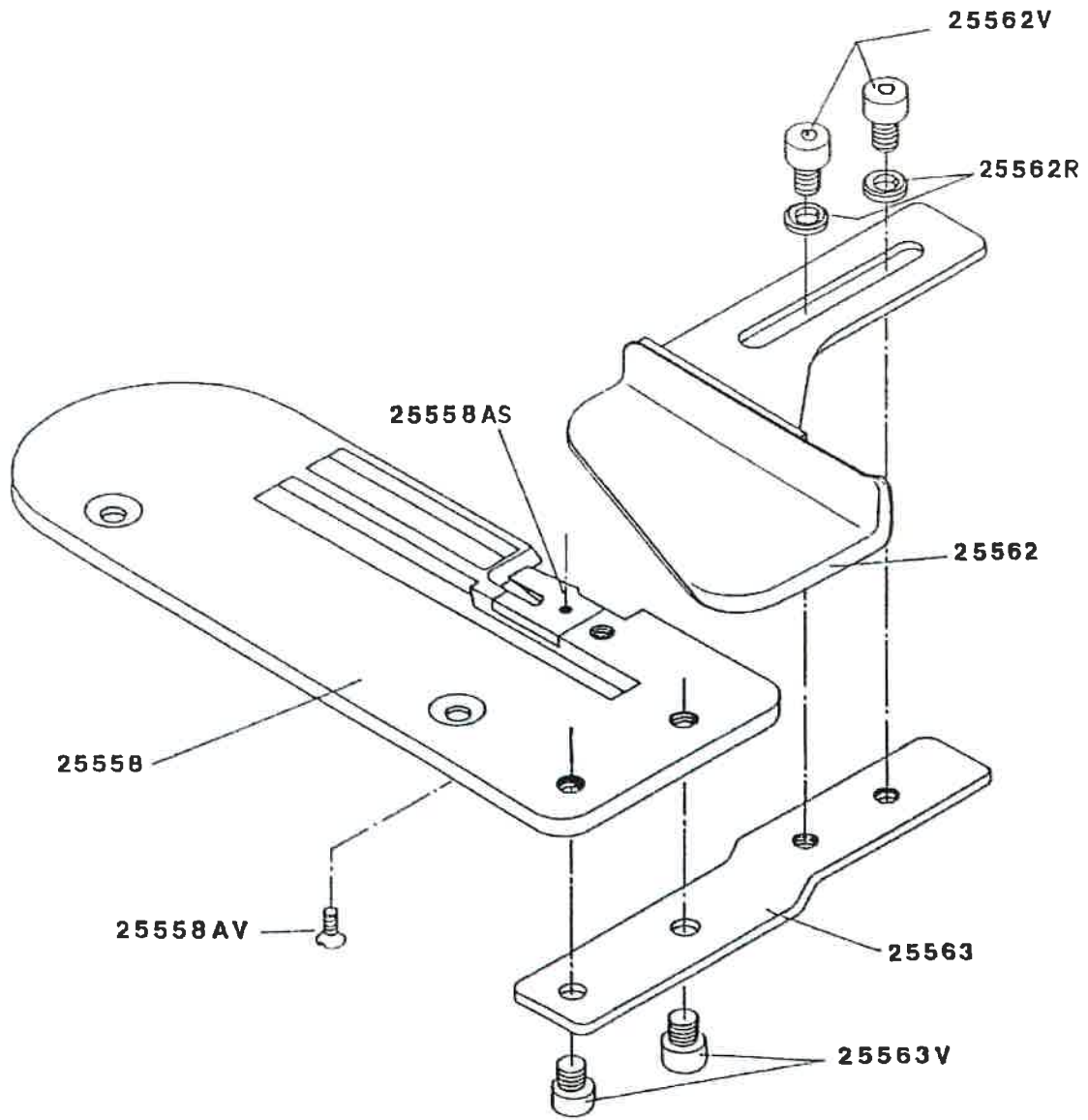
Ref. No.	Part No.	Description
31		Thread guide holder
32		Screw
33		Thread guide
34		Screw

EXTERNAL THREAD FEED ADJUSTER (OPTION)



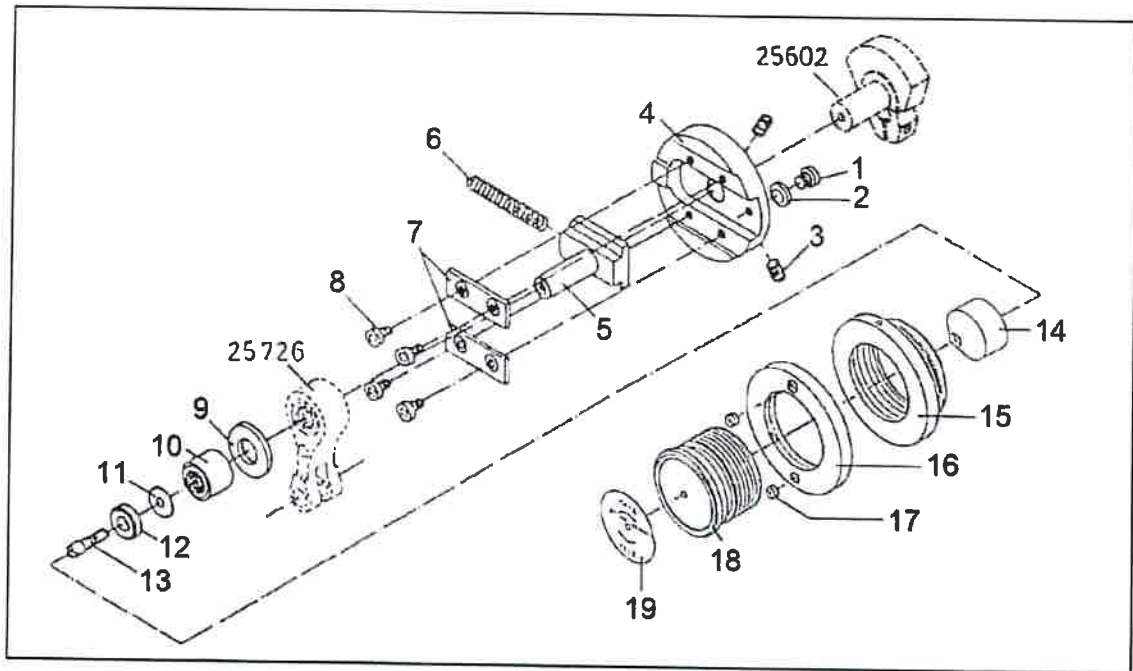
Ref. No.	Part No.	Description
1	25793	Nut
1-1	25794	Pin
2	25787S	Thread feed adjuster holder
3	25791	Thread feed regulator
3-1	25794A	Regulator
3-2	25794	Pin
4	25790	Screw

CARPET GUIDE



Ref. No.	Part No.	Description
	25558	Needle plate
	25558AS	Finger
	25558AV	Screw
	25562	Guide
	25562V	Screw
	25562R	Washer
	25563	Guide holder
	25563V	Screw

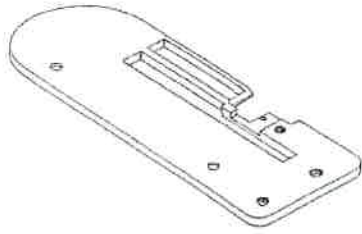
EXTERNAL STITCH DENSITY ADJUSTER (OPTION)



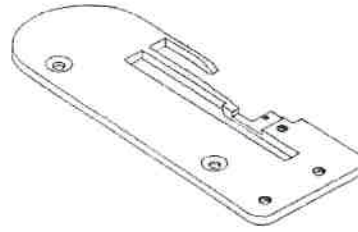
Ref. No.	Part No.	Description
1	25810VL	Screw
2	25810R	Washer
3	25810V	Screw
4	25810	Adjuster holder
5	25811	Stitch length guide
6	25812	Spring
7	25810P	Plate
8	25810PV	Screw
9	25814	Washer
10	25815	Bearing
11	25817	Washer
12	25818	Bearing
13	25819	Screw
14	25816	Roller
15	25822	Nut
16	25825	Nut
17	25825V	Screw
18	25821	Screw
19	25823	Sticker

DIFFERENT NEEDLE PLATE

H-2502

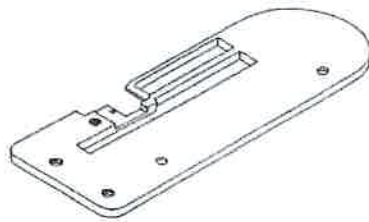


1-1



1-1-1

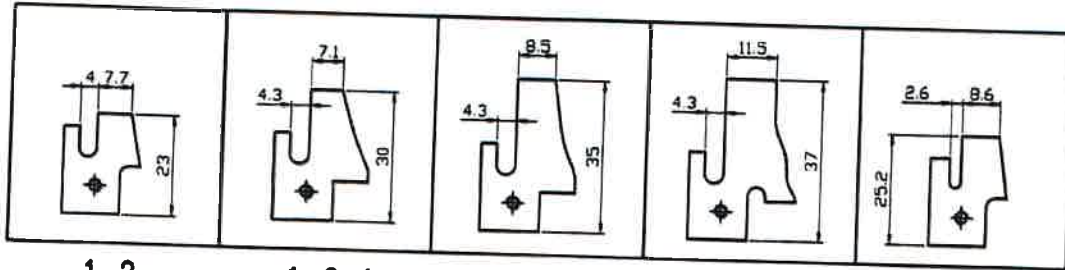
H-2502L



1-1L

DIFFERENT NEEDLE PLATE FINGER

H-2500



1-2

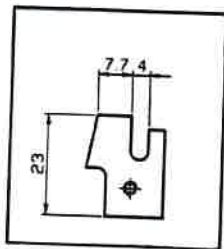
1-2-1

1-2-2

1-2-3

1-2-4

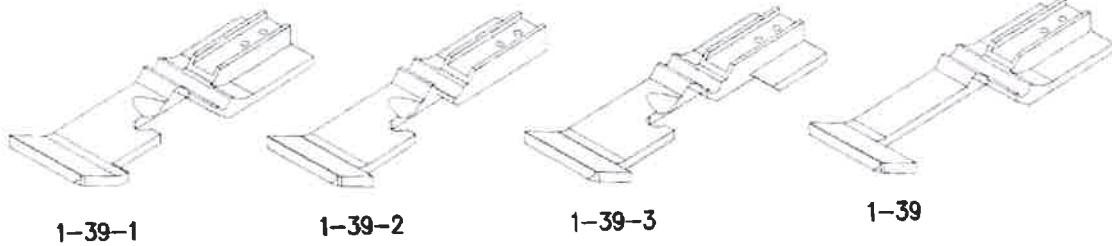
H-2500L



1-2L

DIFFERENT PRESSER FOOT

H-2500



1-39-1

1-39-2

1-39-3

1-39

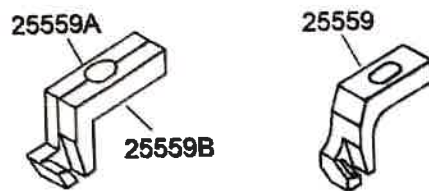
H-2500L



1-39-1L

DIFFERENT NEEDLE GUIDE

H-2500

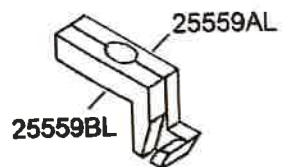


25559A

25559

25559B

H-2500L

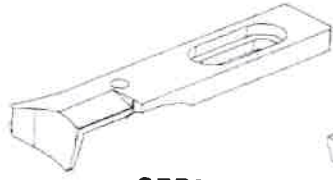


25559AL

25559BL

DIFFERENT CHAIN GUIDE

H-2500



25560H



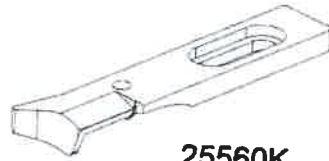
30560GR



25560EE

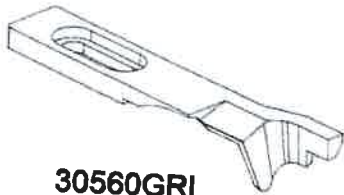


25560CK



25560K

H-2500L



30560GRL

DIFFERENT FEEDDOG

H-2500



5-34



5-34A



5-34-1

H-2500L



5-34L

